

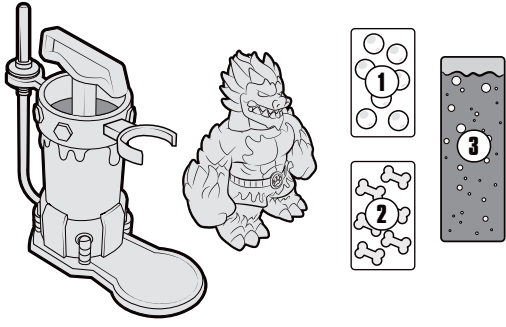
4+

# HEROES OF GOOJITZU HERO CREATOR

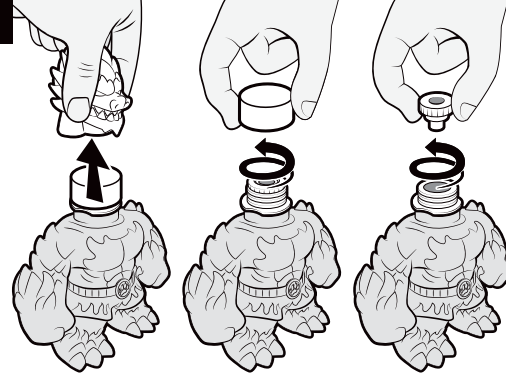
MAKE YOUR OWN PACK  
**INSTRUCTION MANUAL**  
SCAN FOR HOW-TO:



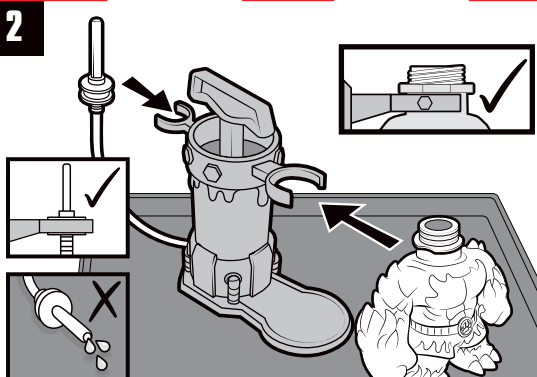
PARENTAL CONSENT REQUIRED  
BEFORE GOING ONLINE AND  
VIEWING ONLINE CONTENT.



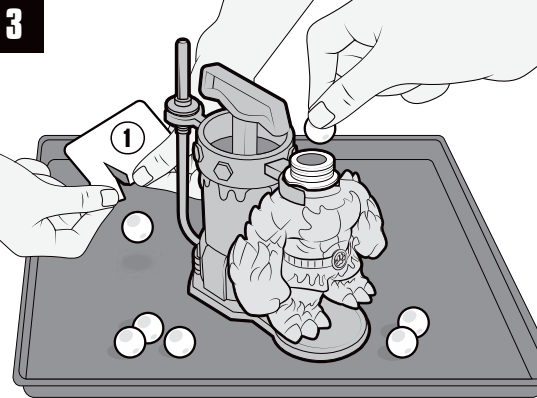
1



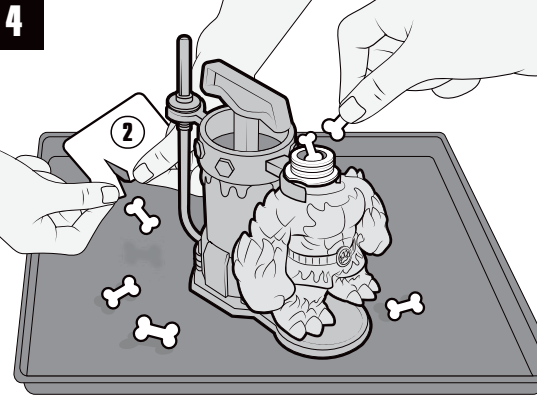
2



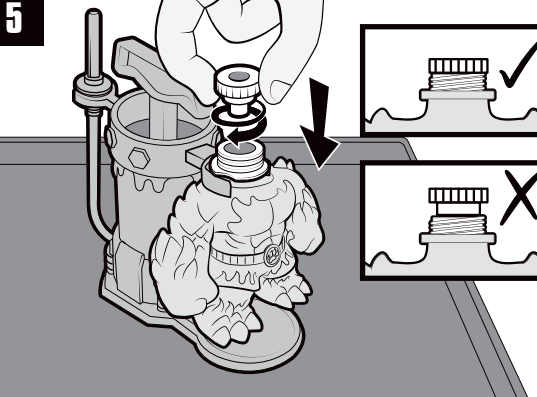
3



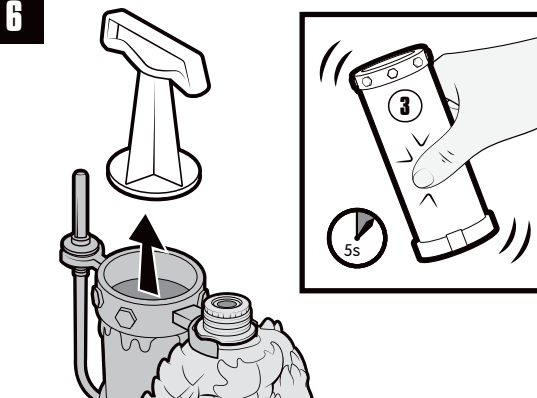
4



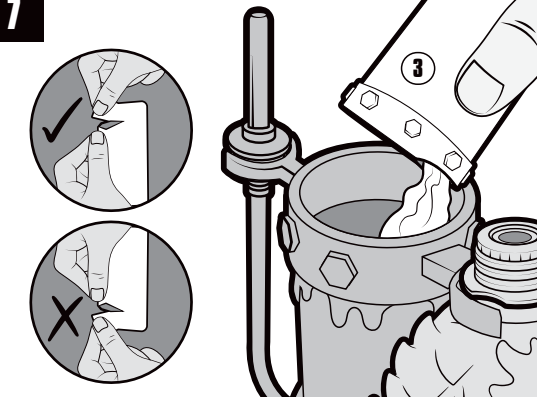
5



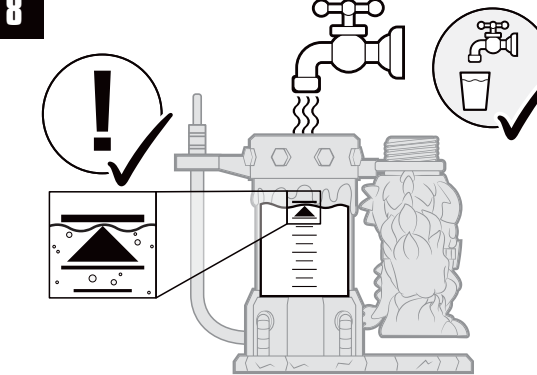
6



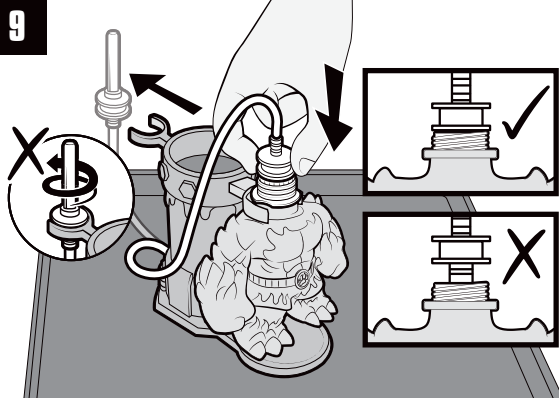
7



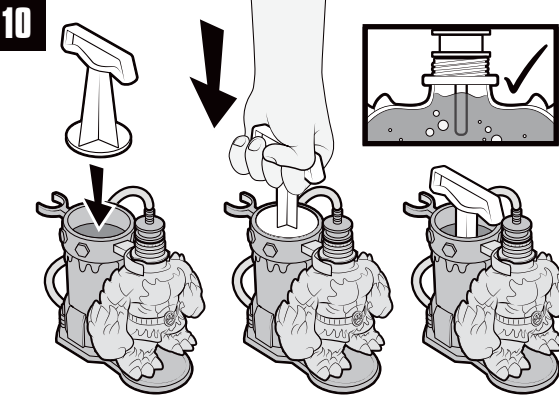
8



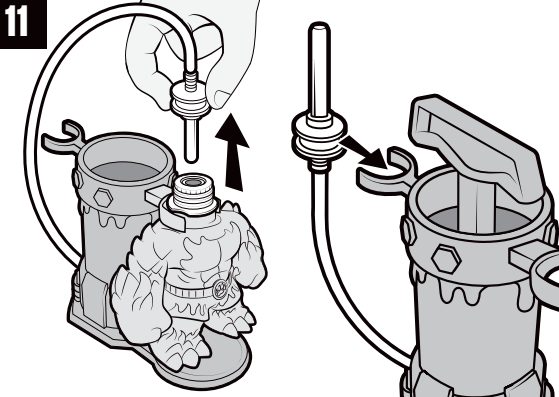
9



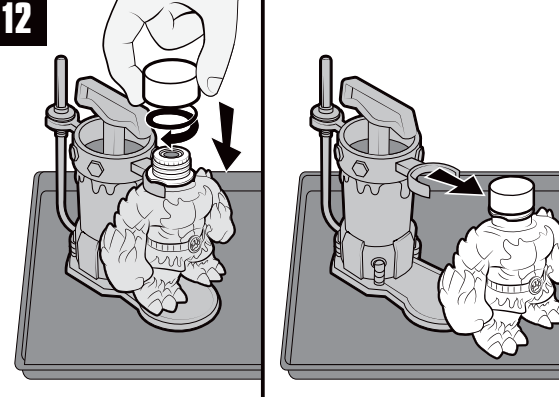
10



11



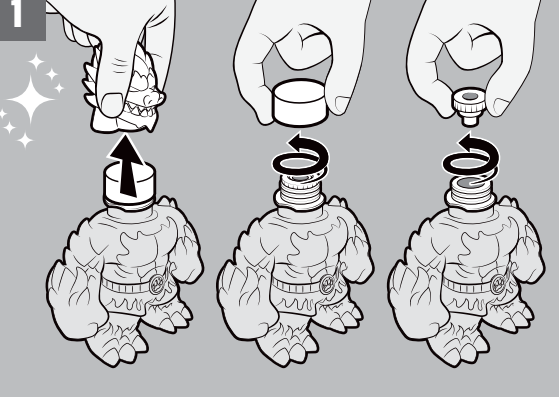
12



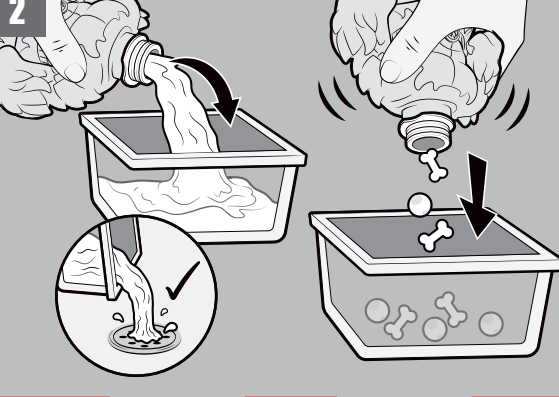
13



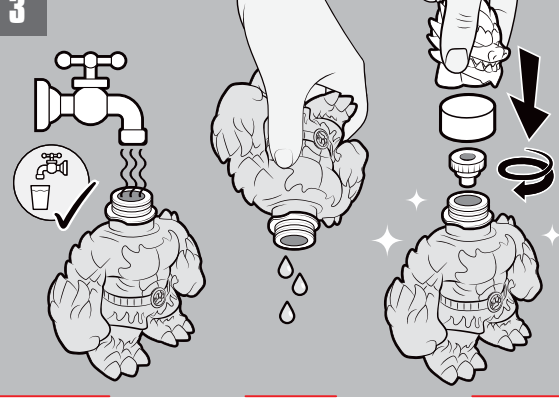
1



2



3



**WARNING:** NOT SUITABLE FOR CHILDREN UNDER 3 YEARS. DO NOT HEAT OR MICROWAVE. DO NOT BITE OR PIERCE. DO NOT LEAVE IN DIRECT SUNLIGHT. DO NOT LEAVE IN VEHICLE ON HOT DAY. DO NOT WRAP OR TIE THE PRODUCT AROUND ANYONE'S HEAD, NECK, ARM, OR LEG. KEEP AWAY FROM PETS.

**CAUTION:** IF PRODUCT RUPTURES AND LIQUID CONTACTS SKIN, WASH WITH CLEAN WATER. DO NOT EAT OR DRINK CONTENTS. FILLER CONTAINS COLOUR WHICH MAY STAIN SOME FABRICS OR SURFACES. DO NOT OVERFILL FIGURE. OVERFILLING MAY LEAD TO PREMATURE FAILURE OF THE PRODUCT. ONLY USE THE MATERIALS ACCOMPANYING THIS PRODUCT DURING PLAY. USE OF UNAPPROVED MATERIALS MAY DAMAGE PRODUCT OR LEAD TO UNSAFE OPERATION. ASSEMBLE TOY ON PROTECTED SURFACE.

**IMPORTANT:** EXCESSIVE STRETCHING OR ABRASION MAY DAMAGE TOY. DISCARD IF BROKEN OR RUPTURED CHARACTER IMMEDIATELY. CLEAN AND DRY TOY BEFORE STORAGE.

**HANDLING INSTRUCTIONS:** • MAXIMUM STRETCH UP TO 3 TIMES LENGTH (20"/50 CM). EXCESSIVE STRETCHING MAY DAMAGE THE TOY. • ONLY PULL LIMBS DIRECTLY OUTWARD FROM BODY. DO NOT TIE IN KNOTS. • DO NOT TWIST LIMBS WHEN STRETCHING OR TWIST OVER 1 ROTATION TO AVOID DAMAGE. • FOR BEST PERFORMANCE AND LONGEVITY, BEST KEPT AT ROOM TEMPERATURE.



www.moosetoys.com  
©2023 The Moose Group



PROXY A/S  
Gothersgade 14, 3<sup>rd</sup> Floor DK-1123  
Copenhagen K, Denmark  
www.proxy.toys

IMPORTANT: Please retain packaging/instructions and purchase details for future reference as they contain important information.



**WWW.GOOJITZU.COM**