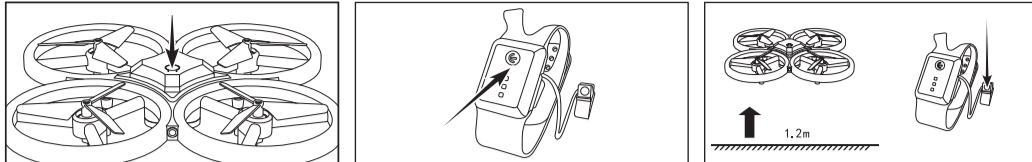


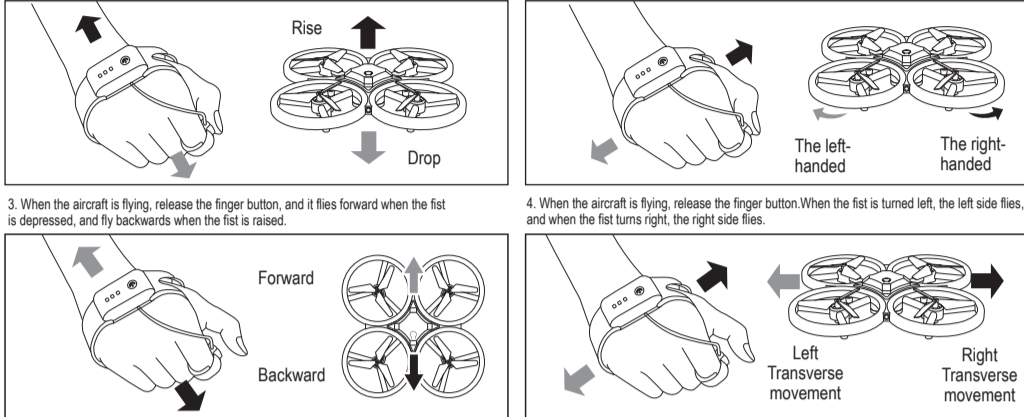
Procedure to pair the drone and the watch remote

- Place the aircraft flat on the ground and press the power button for 1 second to turn it on. After the power is turned on, the indicator flashes from quickly to slowly, indicating waiting to pair.
- Short press the gravity sensor remote control power switch, the indicator light flashes 3 times then keeps on, meaning finish pairing. The aircraft indicator flash slowly then keeps shining, indicating that the pairing is successful.
- When start flying, short press the finger button, the aircraft takes off to 1.2 meters.

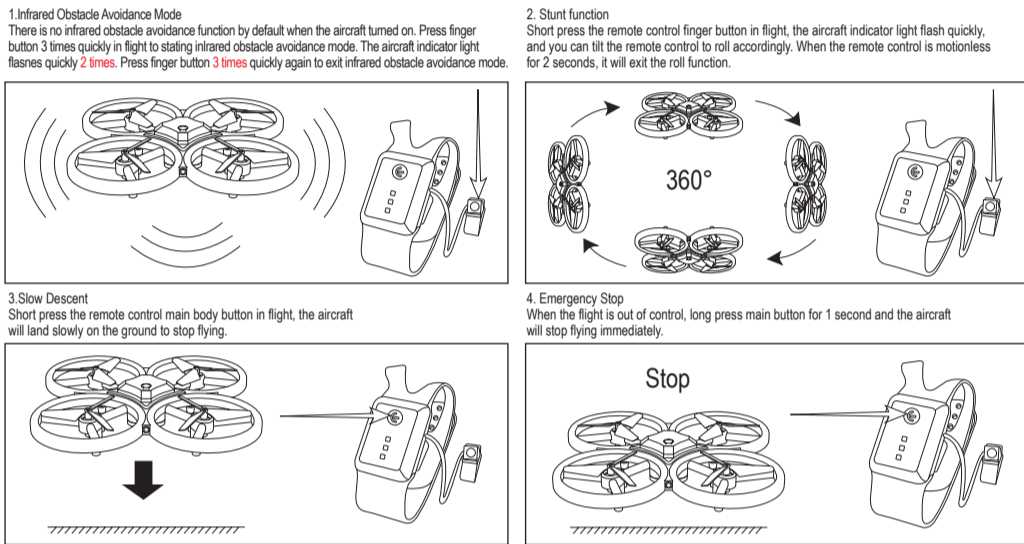


Operation and Control

- While the aircraft is flying, long press the finger button. The aircraft flies up and down when fist goes up and down.
- While the aircraft is flying, long press finger button. Turn fist to left/right, it rotates to the left/right.



Drone Functions



FLASHINGDRONE

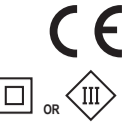
Become our fan on facebook
facebook.com/SilverlitToys

Visit us at
www.Silverlit.com

FLASHINGDRONE

For ages 8+

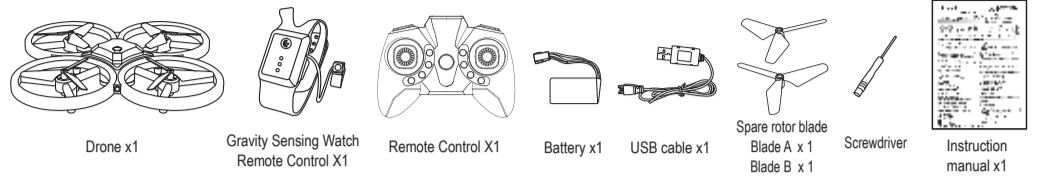
This toy is only to be connected to equipment bearing either of the following symbols:



Frequency Band Range: 2.400 - 2.483GHz
Maximum Radio-Frequency Power: < 10mW

MFR No. 84600

Delivery contents



Precautions, Warnings and Statements

WEEE
When this appliance is out of use, please remove all batteries and dispose of them separately. Bring electrical appliances to the local collecting points for waste electrical and electronic equipment. Other components can be disposed of in domestic refuse.

Safety Precautions:
Warning: Changes or modifications to this unit not expressly approved by the party responsible for compliance could void the user's authority to operate the equipment.
- Never take apart or attempt to modify the product. This could damage the product.
- Drone piloting requires specific skills and should be learned under direct supervision of an experienced adult.
- Never operate this product if it has damaged parts.
- Attention! Do not fly the Drone near persons and animals.
- Do not fly the Drone in the vicinity of water and power lines.
- Always keep your eyes on the Drone and prevent it from landing or crashing near your head, your body, or on other people.
- Stand during operation in order to get out of the way of the Drone quickly if necessary.
- Always switch the Drone and the transmitter off when not operating.
- Warning! Do not touch the running rotors. Keep hands, hair and loose clothes away from moving parts to avoid injury.
- Never hold or throw any objects into the running rotors.
- Attention! Risk of eye injuries! Keep a safety distance of at least 1 meter.
- Instruction sheet and packaging must be retained since it contains important information.

FCC Statements
This device complies with part 15 of the FCC rules. Operation is subject to the following two conditions:
1) This device may not cause harmful interference, and
2) This device must accept any interference received, including interference that may cause undesired operation.
NOTE: This equipment has been tested and found to comply with the limits for a Class B digital device, pursuant to Part 15 of the FCC Rules. These limits are designed to provide reasonable protection against harmful interference in a residential installation. This equipment generates, uses and can radiate radio frequency energy and, if not installed and used in accordance with the instructions, may cause harmful interference to radio communications. However, there is no guarantee that interference will not occur in a particular installation. If this equipment does cause harmful interference to radio or television reception, which can be determined by turning the equipment off and on, the user is encouraged to try to correct the interference by one or more of the following measures:
- Reorient or relocate the receiving antenna.
- Increase the separation between the equipment and receiver.
- Connect the equipment into an outlet on a circuit different from that to which the receiver is connected.
- Consult the dealer or an experienced radio/TV technician for help.

USB cable statement:
- If battery cannot be charged. Please try another adapter.
- The product must only be used with the provided USB cable for charging.
- Do not use high output adapter for battery charging (1A Maximum).
- Transformer or battery charger used with the toy are to be regularly examined for damage to the cord, plug, enclosure and other parts, and in the event of such damage, they must not be used until the damage has been repaired.

Special notes to adults:
- Caution. Read the manual carefully before first use.
- Assembly should be performed by adults (changing batteries/spare parts, trimming etc). The screwdriver is not a toy, please keep away from the children.
- Parental guidance is recommended when installing or replacing batteries.
- This toy intended to be used in domestic area (house and garden) only.
- Do not change or modify anything on the drone.
- WARNING: This toy produces flashes that may trigger epilepsy in sensitised individuals
Notes:
- Use new alkaline batteries in this toy to obtain best performance.
- This toy must only be used with the recommended charger.
- Do not operate battery charger if it has been damaged in anyway.
- The wires are not to be inserted into socket-outlets.
This toy is equipped with a LiPo rechargeable battery, please pay attention to the following cautions for safety use:
- Do not dispose the battery in fire or heat.
- Do not use or leave the battery near a heat source such as fire or heater.
- Do not strike or throw the battery against hard surface.
- Do not immerse the battery in water, and keep the battery in a cool dry environment.
- When recharging, only use the battery charger specifically for that purpose.
- Do not over-discharge the battery.
- Do not connect the battery to an electrical outlet.
- Do not directly solder the battery and pierce the battery with a nail or other sharp object.
- Do not transport or store the battery together with metal objects such as necklaces, hairpins etc.
- Do not disassemble or alter the battery.
- Charge the battery every 6 months.
- This toy (drone) contains battery that is non-replaceable
Battery requirement for the Drone:
Power Supply : ---
Rating : DC 4.27 V ; 2.04 W
Batteries : 1 x 3.7 V LiPo Rechargeable Battery Pack (included)

Battery requirement for Watch remote control:
Power Supply : ---
Rating : DC 3 V
Batteries : 1 x CR2032 3 V li-Mn Battery (included)

Battery requirement for Transmitter:
Power Supply : ---
Rating : DC 4.5 V ; 0.3 W
Batteries : 3 x 1.5 V "AAA"/LR03/AM4 (not included)

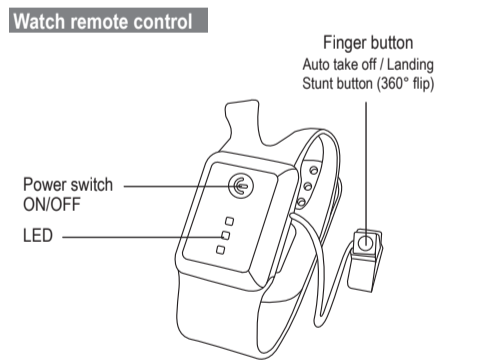
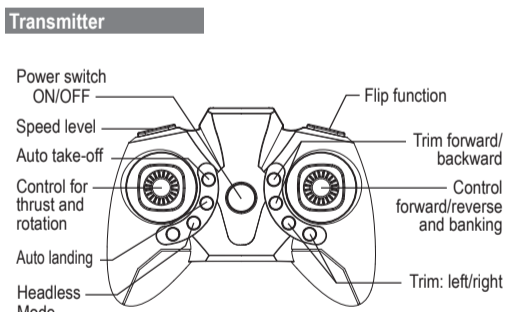
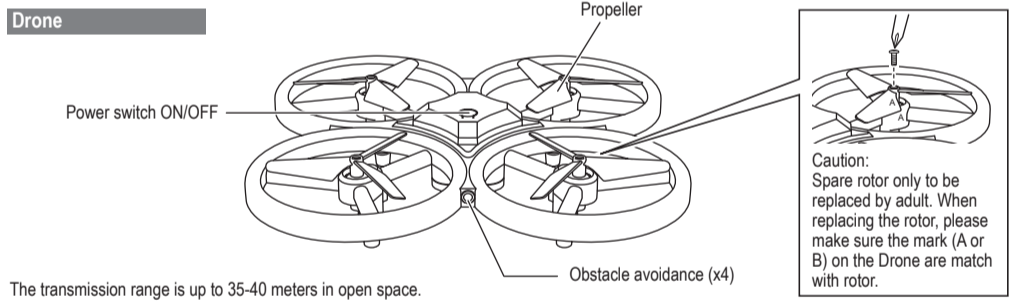
Care and Maintenance:
- Always remove batteries from the toy when it is not being used for a long period of time. (Transmitter only)
- Wipe the toy gently with a clean damp cloth.
- Keep the toy away from direct heat.
- Do not submerge the toy into water that can damage the electronic assemblies.

The normal function of the product may be disturbed by Strong Electro Magnetic Interference. If so, simply reset the product to resume normal operation by following the instruction manual. In case the function could not resume, please use the product in other location.

Silverlit®

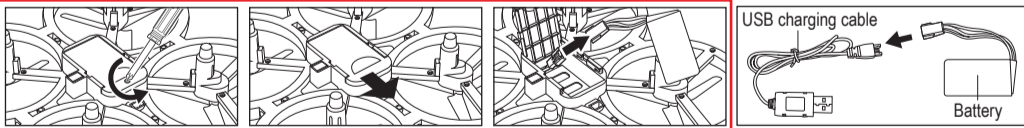
Silverlit SAS, 80 rue Barthelemy Danjou,
92100 Boulogne-Billancourt / France. ©2021 Silverlit. All rights reserved.

Part Identification



Battery Installation & Charging

Drone Battery Charging (*Make sure the power switch is on "OFF" position.)

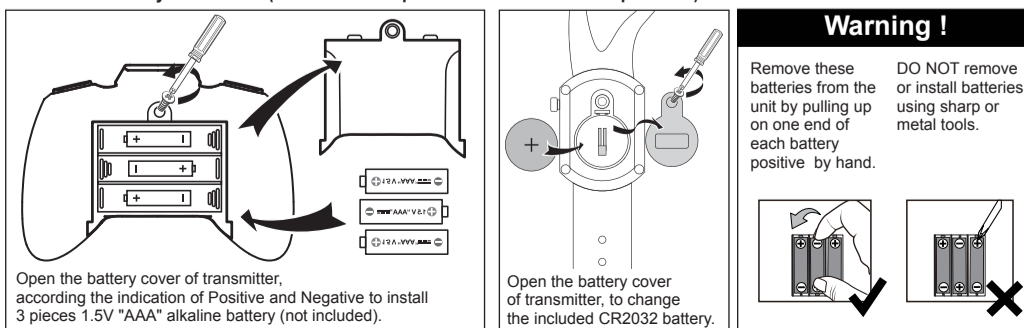


Remove the lithium battery of the aircraft from the battery holder as shown in the picture and unplug the power plug.
Insert the USB plug of the charger into the USB port of the computer, and then connect the charging plug of the charger to the lithium battery plug.
When it is charging, the RED LED will light up. The LED light turns to GREEN when it is fully charged.

Note: This USB charging cable can be connected to the charger or mobile power of most smartphones or to the car USB port for charging. The voltage at the USB interface is 5V±0.5V.

- The drone can operate for about 4-5 minutes per every 60 minutes charging.
- Before recharging the battery, wait 10 - 15 minutes for it to cool down.

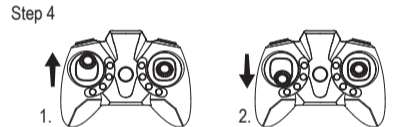
Transmitter Battery Installation (*Make sure the power switch is on "OFF" position.)



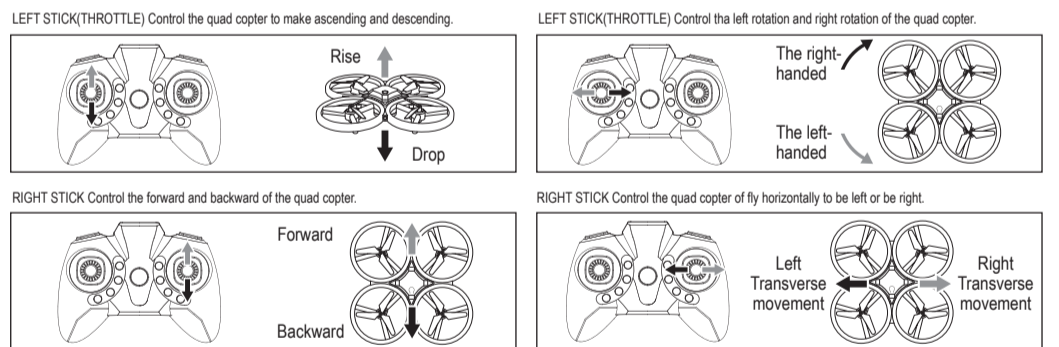
Warning !
Remove these batteries from the unit by pulling up on one end of each battery positive by hand. DO NOT remove or install batteries using sharp or metal tools.

Procedure to pair the drone and the transmitter

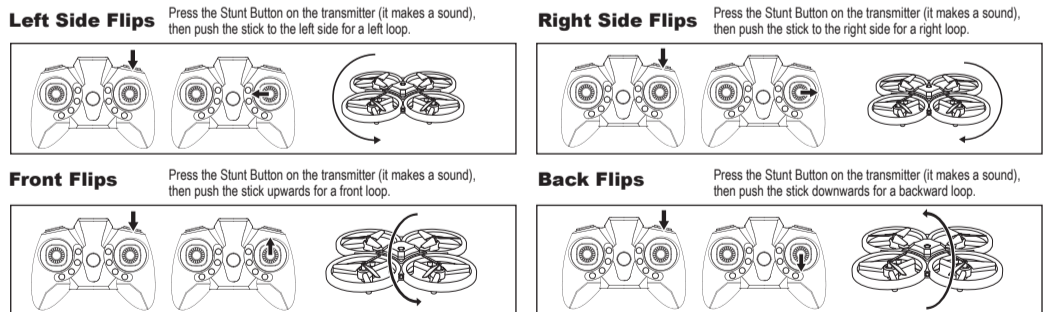
- Open the drone's battery compartment and connect the battery.
- Insert the battery into the battery compartment and close the cover. Switch on the drone (press start button).
- Turn the power switch on the transmitter to "ON" position.
- When the flashing LEDs of the drone become gradually fade in and out, push the altitude stick to top (1) then pull down to bottom (2). The pair procedure is completed.



Operation and Control



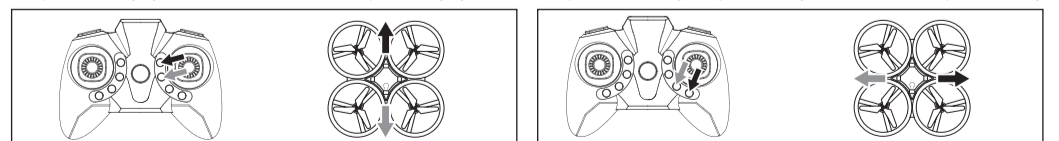
Stunt function



Trimming the drone

Keep going forward
When your drone keeps going forward, press backward trimmer continually until it stops going forward.
Keep going backward
When your drone keeps going backward, press forward trimmer continually until it stops going backward.

Keep going right
When your drone keeps rolling sideways to right, press left side of roll button continually until it stops rolling.
Keep going left
When your drone keeps rolling sideways to left, press right side of roll button continually until it stops rolling.



Auto take-off / landing

