



Owner's manual

Users can view the electronic instructions at <https://wiki.worx.com/en>.

ORIGINAL INSTRUCTIONS

PRODUCT SAFETY

GENERAL SAFETY WARNINGS

⚠ WARNING: Read all safety warnings and all instructions. Failure to follow the warnings and instructions may result in electric shock, fire and/or serious injury.

Carefully read the instructions for the safe operation of the machine.

Save all warnings and instructions for future reference.

-This appliance is not intended for use by persons (including children) with reduced physical, sensory or mental capabilities, or lack of experience and knowledge, unless they have been given supervision or instruction concerning use of the appliance by a person responsible for their safety.
-Children should be supervised to ensure that they do not play with the appliance.

WARNING: For the purposes of recharging the battery, only use the detachable supply unit provided with this appliance.

WARNING: To reduce the risk of injury to persons and damage to the machine, do not remove battery pack before switching off the machine.

IMPORTANT

READ CAREFULLY BEFORE USE

KEEP FOR FUTURE REFERENCE

Safe operation practices

Training

- Read the instructions carefully. Make sure you understand the instructions and be familiar with the controls and the proper use of the appliance.
- Never allow people unfamiliar with these instructions or children to use the appliance. Local regulations can restrict the age of the operator.
- The operator or user is responsible for accidents or hazards occurring to other people or their property.

Preparation

- Ensure the correct installation of the automatic perimeter delineation system as instructed. This machine works without boundary wire or virtual boundary. It can automatically identify the working area and non-working area through the camera. Once the machine is turned on, the camera will automatically turn on and work at the same time. The machine recognizes that the lawn is the working area through the camera, and the non-working area that is not the lawn. When the machine walks to the boundary between lawn and non-lawn, it will automatically turn to return to the working area.
Add a magnetic strip to separate it from the neighbor's lawn. The machine returns when it encounters a magnetic strip while mowing. Return along the magnetic strip when returning.
- Periodically inspect the area where the appliance is to be used and remove all stones, sticks, wires, bones, and other foreign objects. Periodically inspect and clean the boundaries between grass and non-grass. Clearing boundaries helps the lawnmower to identify the working area.
- Periodically visually inspect to see that the blades, blade bolts and cutter assembly are not worn or damaged. Replace worn or damaged blades and bolts in sets to preserve balance.
- On multi-spindle appliances, take care as rotating one blade can cause other blades to rotate.
- WARNING!** The lawnmower shall not be operated without the guard in place.

Operation

1. General

- a) Never operate the appliance with defective guards, or without safety devices, for example deflectors, in place.
- b) Do not put hands or feet near or under rotating parts. Keep clear of the discharge opening at all times.
- c) Never pick up or carry an appliance while the motor is running.
- d) Operate the disabling device from the appliance.
 - Before clearing a blockage;
 - Before checking, cleaning or working on the appliance;
 - After striking a foreign object to inspect the machine for damage;
 - If the machine starts to vibrate abnormally, and to check for damage before restarting.
- e) It is not permitted to modify the original design of robotic lawnmower. All modifications are made at your own risk.
- f) Start robotic lawnmower according to the instructions. When the power key is switched on, make sure you keep your hands and feet away from the rotating blades. Never put your hands and feet under the mower.
- g) Never lift up robotic lawnmower or carry it when the power key is switched on.
- h) Do not let persons who do not know how robotic lawnmower works and behaves use the mower.
- i) Do not put anything on top of robotic lawnmower or its charging station.
- j) Do not allow robotic lawnmower to be used with a defective blade disc or body. Neither should it be used with defective blades, screws, nuts or cables.
- k) Always switch off robotic lawnmower when you do not intend to use the mower. Robotic lawnmower can only start when the power key is switched on and the correct PIN code has been entered.
- l) Keep your hands and feet away from the rotating blades. Never place your hands or feet close to or under the body when robotic lawnmower is in operation.
- m) To avoid using the machine and its peripherals in bad weather conditions especially when there is a risk of lightning.
- n) Do not touch moving hazardous parts before these have come to a complete stop.
- o) For machines used in public areas, that warning signs shall be placed around the working area of the machine. They shall show the substance of the following text:
Warning! Automatic lawnmower! Keep away from the machine! Supervise children!
- p) To avoid the risk of injury, please stop the mower and carry out the mower to another lawn to be mowed. Never drag or pull the mower on operation when you change the lawn to be mowed.

2. Additionally when the appliance is operating automatically

- a) Do not leave the machine to operate unattended if you know that there are pets, children or people in the vicinity.
- b) Please set the smart phone to automatically lock the screen after 30 s to prevent the APP from being misused by others.

Maintenance and storage

⚠ WARNING! When the mower is turned upside down the power key must always be switched off.

The power key should be switched off during all work on the mower's underframe, such as cleaning or replacing the blades.

- a) Keep all nuts, bolts and screws tight to be sure the appliance is in safe working condition.
- b) Inspect the robotic lawnmower each week and replace worn or damaged parts for safety.
- c) Check especially that the blades and blade disc are not damaged. Replace all blades and screws at the same time if necessary so that the rotating parts are balanced.

- d) Ensure that only replacement cutting means of the right type are used.
- e) Ensure that batteries are charged using the correct charger recommended by the manufacturer. Incorrect use may result in electric shock, overheating or leakage of corrosive liquid from the battery.
- f) In the event of leakage of electrolyte flush with water/neutralizing agent, seek medical help if it comes into contact with the eyes etc.
- g) Servicing of the appliance should be according to manufacturers' instructions.
- h) In order to obtain the best performance, please pay attention to the following ambient temperature range, do not charge, use, or store in the case of exceeding the following temperature range:
 - a) Charging temperature range: 4°C~45°C
 - b) Discharge temperature range: -20°C~55°C
 - c) Storage temperature range: -20°C~75°C
- i) Leaking battery fluid can cause skin and eye irritation or chemical burns.
 - a) Avoid contact with skin and eyes.
 - b) If liquid gets in eyes: Do not rub. Flush open eyes with water for at least 15 minutes, and seek medical advice.
 - c) In case of accidental contact, wash the contact area immediately and thoroughly with mild soap and water.
 - d) Use an inert absorbent such as sand on spilled liquid.

Recommendation

To connect the machine and/or its peripherals only to a supply circuit protected by a residual current device (RCD) with a tripping current of not more than 30 mA.

Residual risks

To avoid injuries, wear protective gloves when replacing the blades.

Transport

The original packaging should be used when transporting robotic lawnmower over long distances.

To safely move form or within the working area:

- a) Press the STOP button to stop the mower.
 - You select the four digit PIN code when you start the mower for the first time.
- b) Always switch off robotic lawnmower if you intend to carry the mower.
- c) Carry the mower by the handle at the front under the mower. Carry the mower with the blade disc away from the body.

RF exposure requirements

To satisfy RF exposure requirements, a separation distance of 200mm or more should be maintained between this device and persons during device operation.

To ensure compliance, operations at closer than this distance is not recommended. The antenna used for this transmitter must not be co-located in conjunction with any other antenna or transmitter.

This is a class III appliances and it must only be supplied at safety extra low voltage corresponding to the marking on the appliance.

WARNING: For the purposes of recharging the battery, only use the detachable supply unit provided with this appliance.

Safety Warnings for battery pack

- a) Do not dismantle, open or shred cells or battery pack.**

- b) Do not short-circuit a battery pack. Do not store battery packs haphazardly in a box or drawer where they may short-circuit each other or be short-circuited by conductive materials.** When battery pack is not in use, keep it away from other metal objects, like paper clips, coins, keys, nails, screws or other small metal objects, that can make a connection from one terminal to another. Shorting the battery terminals together may cause burns or a fire.
- c) Do not expose battery pack to heat or fire. Avoid storage in direct sunlight.**
- d) Do not subject battery pack to mechanical shock.**
- e) In the event of battery leaking, do not allow the liquid to come into contact with the skin or eyes. If contact has been made, wash the affected area with copious amounts of water and seek medical advice.**
- f) Keep battery pack clean and dry.**
- g) Wipe the battery pack terminals with a clean dry cloth if they become dirty.**
- h) Battery pack needs to be charged before use. Always refer to this instruction and use the correct charging procedure.**
- i) Do not maintain battery pack on charge when not in use.**
- j) After extended periods of storage, it may be necessary to charge and discharge the battery pack several times to obtain maximum performance.**
- k) Recharge only with the charger specified by Worx. Do not use any charger other than that specifically provided for use with the equipment.**
- l) Do not use any battery pack which is not designed for use with the equipment.**
- m) Keep battery pack out of the reach of children.**
- n) Retain the original product literature for future reference.**
- o) Remove the battery from the equipment when not in use.**
- p) Dispose of properly.**
- q) Do not mix cells of different manufacture, capacity, size or type within a device.**
- r) Keep the battery away from microwaves and high pressure.**
- s) Warning! Do not use non-rechargeable batteries.**

User manual requirements for wireless product

- a) Operation of this device is subject to the following two conditions:
 - (1) This device may not cause harmful interference, and
 - (2) this device must accept any interference received, including interference that may cause undesired operation.
- b) Caution: Changes or modifications to this unit not expressly approved by the party responsible for compliance could void the user's authority to operate the equipment.
- c) NOTE: This equipment generates, uses and can radiate radio frequency energy and, if not installed and used in accordance with the instructions, may cause harmful interference to radio communications. However, there is no guarantee that interference will not occur in a particular installation. If this equipment does cause harmful interference to radio or television reception, which can be determined by turning the equipment off and on, the user is encouraged to try to correct the interference by one or more of the following measures:
 - Reorient or relocate the receiving antenna.
 - Increase the separation between the equipment and receiver.
 - Connect the equipment into an outlet on a circuit different from that to which the receiver is connected.
 - Consult the dealer or an experienced radio/TV technician for help.

Band application caution (for Wi-Fi 5G device)

Legal Information This device may be operated in all member states of the EU. Observe national and local regulations where the device is used.

This device is restricted to indoor use only when operating in 5150 to 5350 MHz frequency range in following countries:

| | | | | | | |
|----|----|----|----|----|----|----|
| AT | BE | BG | HR | CY | CZ | DK |
| EE | FI | FR | DE | EL | HU | IE |
| IT | LV | LT | LU | MT | NL | PL |
| PT | RO | SK | SI | ES | SE | UK |

INFORMATION ON LANDROID VISION



WARNING – robotic lawn mower can be dangerous if incorrectly used. Read through the Operator's manual carefully and understand the content before using your robotic lawn mower.



WARNING - Keep a safe distance from the machine when operating.



WARNING – Operate the disabling device before working on or lifting the machine.



WARNING - Do not ride on the machine.



Li-Ion battery. This product has been marked with a symbol relating to 'separate collection' for all battery packs and battery pack. It will then be recycled or dismantled in order to reduce the impact on the environment. Battery packs can be hazardous for the environment and for human health since they contain hazardous substances.



Do not burn



Batteries may enter water cycle if disposed improperly, which can be hazardous for ecosystem. Do not dispose of waste batteries as unsorted municipal waste.



Prohibit disassembling the machine without authorization.



Waste electrical products must not be disposed of with household waste. Please recycle where facilities exist. Check with your local authorities or retailer for recycling advice.



Class III appliance



Read operator's manual

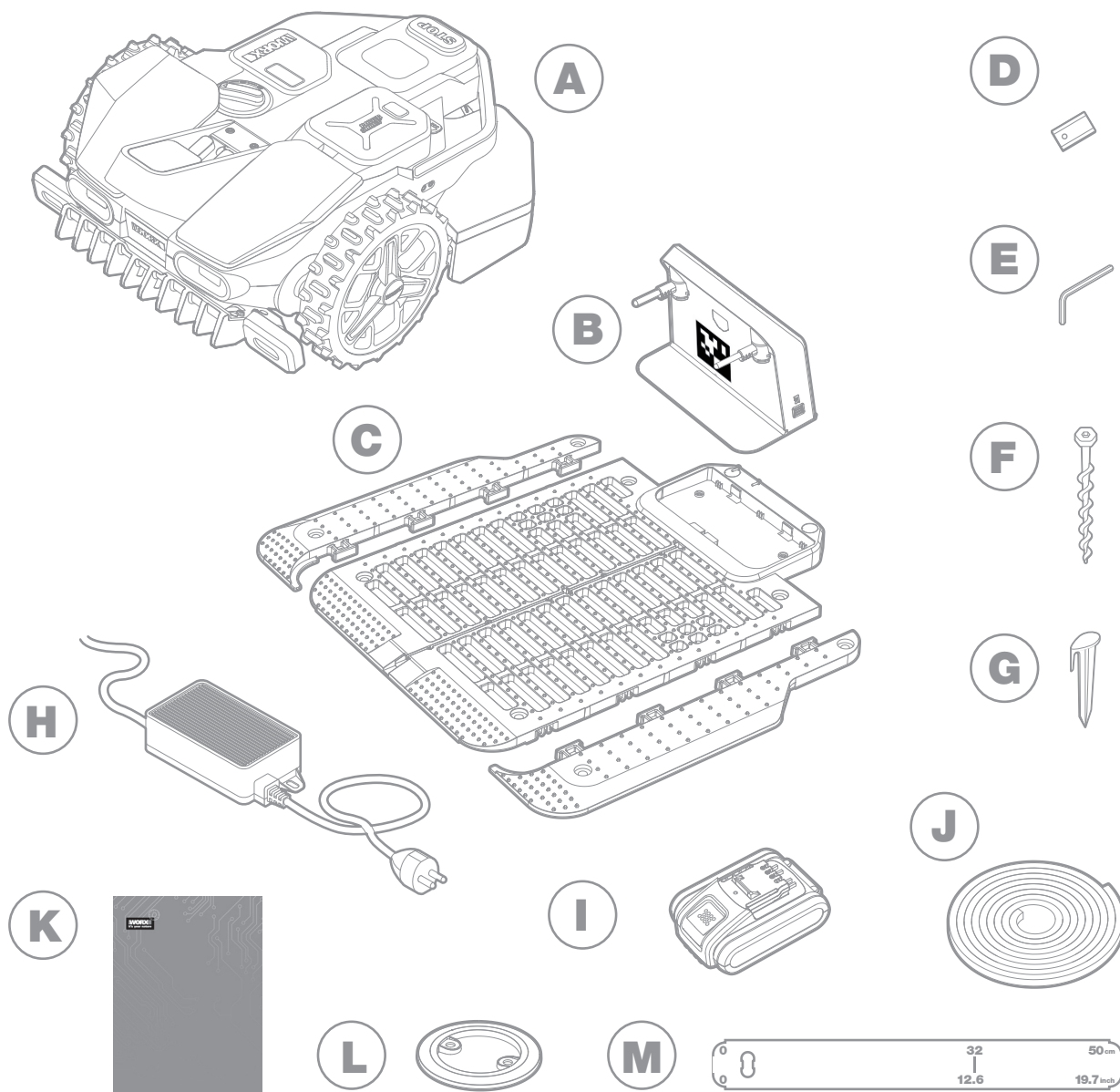


Detachable supply unit

Your Landroid Vision can be used with other Worx functional accessories. Visit www.worxlandroid.com to learn more about these available accessory options.

COMPONENT LIST

WHAT'S IN THE BOX



The picture is only for reference

A Worx Landroid Vision

B Charging tower

C Charging base plate

D Spare blades kits

E Hex key

F Screws

G Magnetic strip pegs

H Power supply

I 20V battery

J Magnetic strip in green*

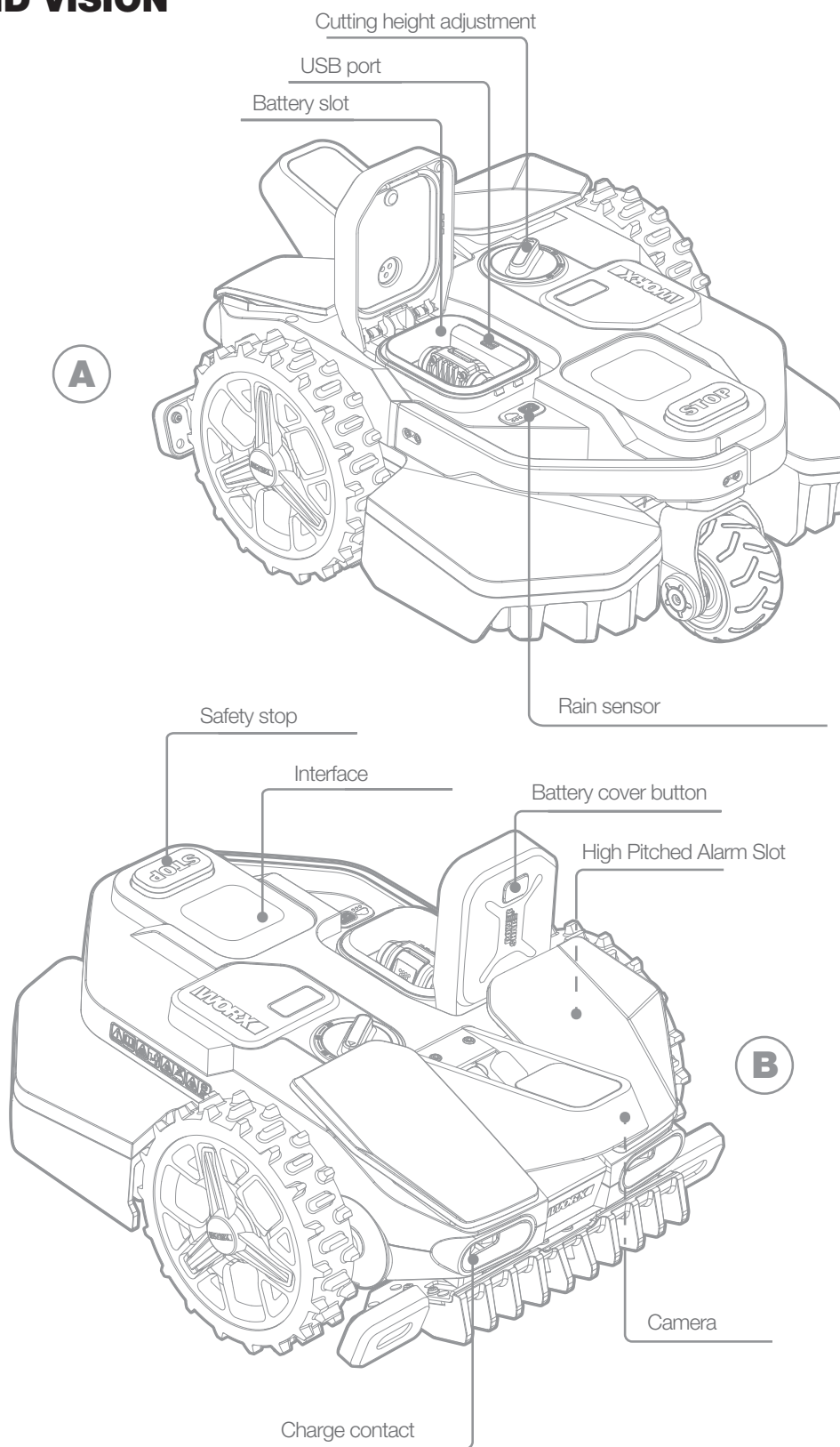
K Manuals

L RFID

M Measurement gauge

* Only for Landroid Vision


GETTING TO KNOW LANDROID VISION



The picture is only for reference


TECHNICAL DATA

Type **WR202E (200-299 - designation of machinery, representative of Robotic lawn mower with Vision technology)**

| | WR202E |
|---|---|
| No load speed (/min) | 2800 /min |
| Cutting area (m ²) | 250 m ² |
| Cutting diameter (cm) | 18 cm |
| Cutting height (mm) | 30-60 mm |
| Cutting system | 3 pivoting razor blades |
| Cutting height positions | 4 |
| Slope (%) | 30% |
| Battery type | Lithium-ion |
| Battery Capacity (Ah) | 2 Ah |
| Battery model | WA3502 |
| Charging time approx. (mins.) | 80 mins. |
| Charger model | WA3750.1 / WA3755.1 |
| Charger rating | Input: 100-240 V~50/60 Hz, 38W, Output: 20 V  , 1.5 A |
| Machinery weight (kg) | 13.2 kg |
| Protection degree | III |
| APP (Wi-Fi/Bluetooth) | Y |
| Frequency bands for NFC (MHz) | 13.56 MHz |
| Maximum Transmitted Power for NFC (dBuA/m) | 83 dBuA/m |
| Frequency bands for Bluetooth (MHz) | 2400-2483.5 MHz |
| Maximum Transmitted Power for Bluetooth (dBm) | 8 dBm |
| Frequency bands for Wi-Fi (MHz) | 2400-2483.5 MHz, 5150-5350 MHz, 5470-5725 MHz |
| Maximum Transmitted Power for Wi-Fi (dBm) | 20 dBm |
| Frequency bands for Wi-Fi (MHz) | 5725 ~5850 MHz |
| Maximum Transmitted Power for Wi-Fi (dBm) | 14 dBm |
| Waterproof level | IPX 5 |

*Voltage measured at no load. Initial battery voltage reaches maximum of 20 volts. Nominal voltage is 18 volts.

NOISE DATA

| | WR202E |
|--|--------------------------------|
| A weighted sound pressure | $L_{pA} = 50.19 \text{ dB(A)}$ |
| | $K_{pA} = 3 \text{ dB(A)}$ |
| A weighted sound power | $L_{wA} = 58.19 \text{ dB(A)}$ |
| | $K_{wA} = 3 \text{ dB(A)}$ |
| Wear ear protection when sound pressure is over 80 dB (A).  | |

A degree of noise from the machine is not avoidable. Route noisy work is to be licensed and limits for certain periods. Keep rest periods and they may need to restrict the working hours to a minimum. For their personal protection and protection of people working nearby, an appropriate hearing protection shall be worn.

ACCESSORIES

| | WR202E |
|-------------------------------|--------|
| Screw | 14 |
| Charging tower | 1 |
| Charging base plate | 1 |
| Magnetic strip pegs | 8 |
| Hex key | 1 |
| Blade (WA0190) | 9 |
| RFID | 2 |
| Magnetic strip (5m) | 1 |
| Measurement gauge | 1 |
| Battery pack (WA3502) | 1 |
| Charger (WA3750.1 / WA3755.1) | 1 |

We recommend that you purchase genuine accessories listed in the above list from the same store that sold you the tool. Refer to the accessory packaging for further details. Store personnel can assist you and offer advice.

INTENDED USE

The garden product is intended for domestic lawn mowing. It is designed to mow often, maintaining a healthier and better looking lawn than ever before. Depending on the size of your lawn, your Landroid Vision may be programmed to operate at any time or frequency. It is impossible for digging, sweeping or snow cleaning.

MAINTENANCE

Your Landroid Vision, works hard and needs to be cleaned and checked from time to time. This section of our guide helps you keep Landroid Vision in good shape so it can last for years without trouble. Here's how to take care of your Landroid Vision. Switch off the machine before carrying out any service or maintenance.

1. Keep it sharp

Landroid Vision does not cut grass like other mowers. Its cutting blades are razor sharp on 2 edges and rotate in both directions for maximum cutting capacity.

A. The blade turning disc makes a clockwise and counterclockwise rotation at random to use both cutting edges and minimize the frequency of replacing the blades.

B. Each cutting blade will last up to 2 months when it is programmed to mow every day.

C. Always check to see if the blades are chipped or damaged and replace them if they are.

D. When the cutting blades are dull and worn out, they should be replaced with the spare blades provided with your Landroid Vision. Spare blades are also available at your nearest Landroid Vision retailer.

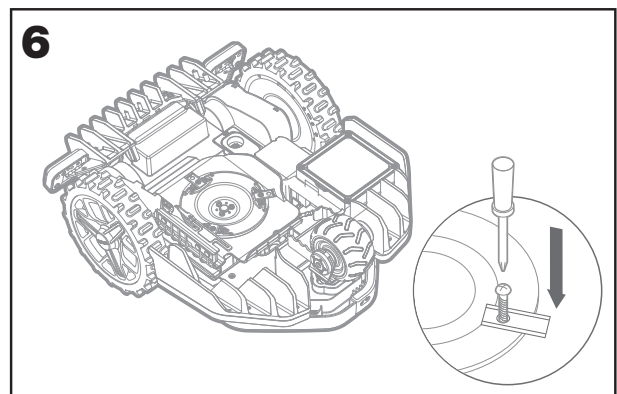
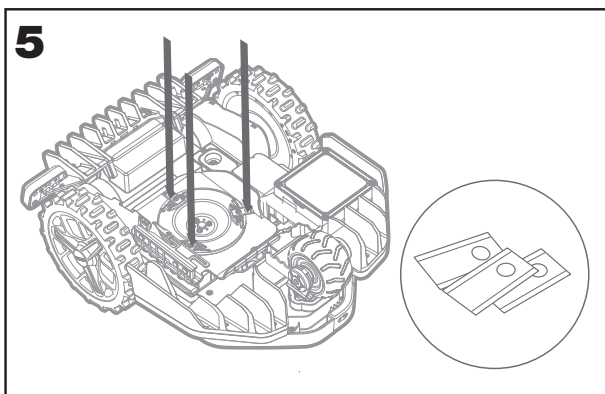
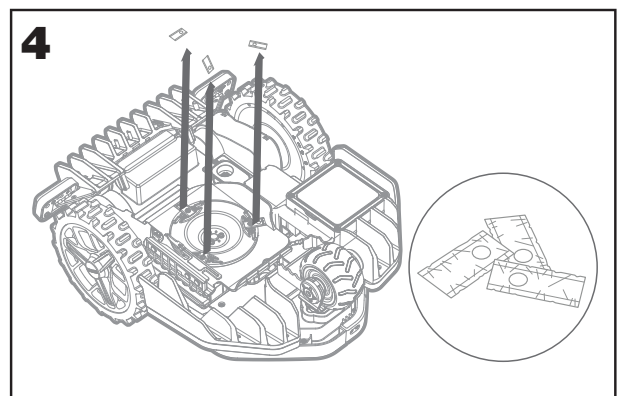
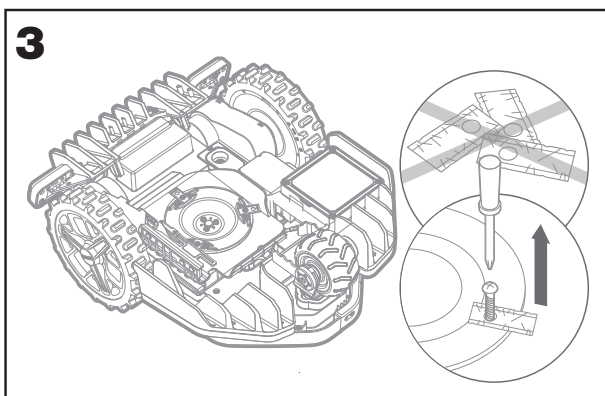
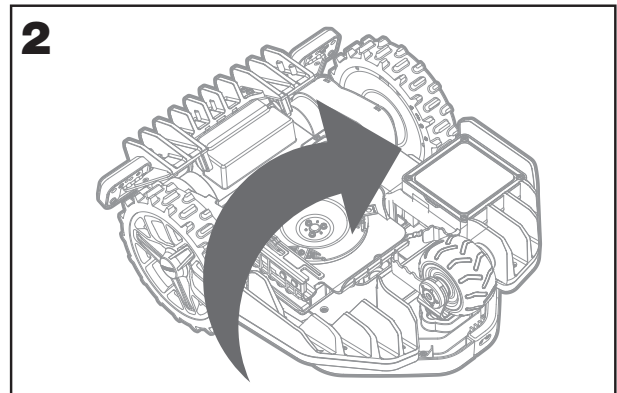
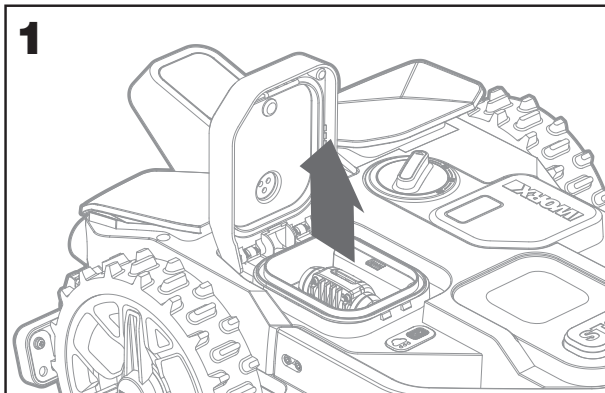
⚠ WARNING! Before cleaning, adjusting, or replacing the blades, turn your Landroid Vision OFF and remove the battery. Always wear protective gloves.

1.1 Replacing the Blades

Remove the battery (See Fig. 1) and gently flip the Landroid Vision over (See Fig. 2).

Take the screws off the blades with a screwdriver (See Fig. 3 - Fig. 4).

Firmly screw on the new blades (See Fig. 5 - Fig. 6).

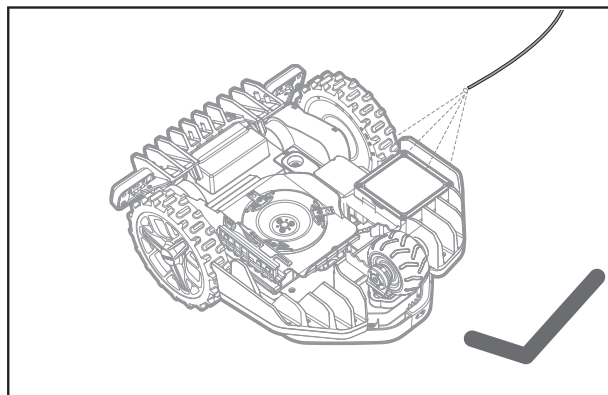
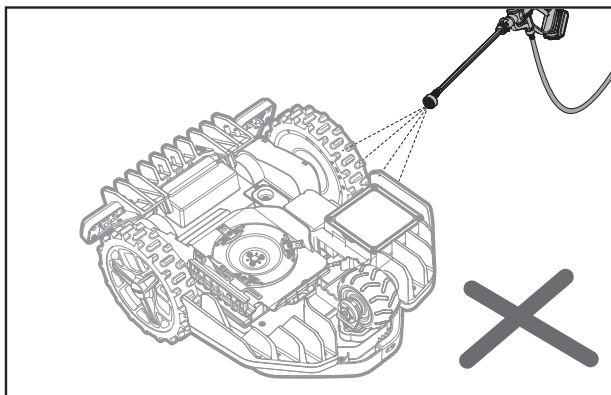


⚠Attention: When fitting new blades, make sure you replace ALL the blades.
Always use new screws when fitting blades. This is important to ensure blade retention and balance the blade turning disc. Failure to use new screws could cause serious injury.
Important: After screwing the blade to the blade disc, make sure the blade is able to spin freely.

2. Keep it clean

Your Landroid Vision should be cleaned regularly. This helps keep it in good conditions, especially removing dirt, debris and the build-up of grass clippings from daily mowing. Turn Landroid Vision off before cleaning it. For extra safety, remove the battery.

⚠Attention: Make sure the battery pack cover is closed when washing your Landroid Vision.
⚠WARNING! YOUR Landroid Vision can only be washed by using a hose! DO NOT use high pressure washer on your Landroid Vision. High pressure water can go inside the sealings and damage electronic and mechanical parts.



2.1 Cleaning the upper body

- A. Clean with a spray bottle filled with water. Don't use solvents or polishers.
- B. Use a brush or a clean cloth to remove built-up dirt.

2.2 Cleaning the Bottom

- A. Flip Landroid Vision upside down.
- B. Remove debris and grass clippings using a brush to remove.
- C. Be careful not to touch the blades with your hands. Wear gloves for protection.
- D. Clean the blade disc, the chassis and the front wheel(s) thoroughly with a soft brush or moist rag.
- E. Rotate the blade disc to ensure it rotates freely. Remove any obstructions. Remove any lodged debris so that they don't cause a crack in the blade disk. Even the tiniest crack affects mowing performance.
- F. Check the blades spin freely around the fixing screws. Remove any obstructions.

2.3 Cleaning the drive wheels

- A. Remove mud from wheels with a brush in order to ensure good grip of the tread.

2.4 Cleaning the camera

- A. We recommend that users regularly wipe the camera with a rag.

2.5 Clearing the charging contacts

- A. Clean the contact pins located on the charging pile and the charging contacts located on the Landroid Vision using a cloth.
- B. Periodically remove any build-up of grass clippings or debris around the contact pins and the charging strips to ensure Landroid Vision successfully charges each time.

3. Keep it charged

The heart of Landroid Vision is its 20V Li-Ion Worx Powershare Battery.

- A. For the proper storage of the battery, make sure it is fully charged and kept in a cool dry place.
- B. The recommended Landroid Vision operation temperature is between 0-55°C.
- C. The life-span of Landroid Vision's battery depends on hours of usage and the length of use per day during the mowing season.

3.1 Landroid Vision can be charged manually

- A. Connect the charging station to a suitable power supply. The green light on the charging station will turn on.
- B. Manually dock Landroid Vision into the charging station while Landroid Vision is powered off.
- C. The green light on the charging station will flash and Landroid Vision will begin to charge.

3.2 The battery can be replaced manually

- Press the button on the battery cover and open the cover.
- Take out the old battery and install the new battery pack.
- Close the battery cover.

NOTE: Install the battery pack according to the polarity direction of the battery marked on the physical object.

4. Keep it stored over the winter

Although Landroid Vision is designed and built to survive the most severe weather conditions, we recommend storing it in your shed or garage during the winter. To prepare it for winter hibernation:

- Clean it thoroughly.
- Fully charge the battery.
- Turn the power off.

4.1 Getting back to work in the Spring

When it is time to re-start Landroid Vision for the new season, please perform the following checks:

- Update the time and date settings via the APP.
- If you notice signs of oxidation on the charging contacts of Landroid Vision and the charging station, clean these with a fine grade emery cloth.
- Full charge Landroid Vision's battery before operating.

5. Keep it updated

Landroid Vision is always improving and new software versions are made available for free. Always keep Landroid Vision software updated to make the most of your machine.

5.1 Check which software version you have

If you want to see the version number:

- Power on Landroid Vision and enter the standby page "IDLE".
- Please long press first and then press for 1 second.
- It will show the version number, for example "h-1_2_31".

5.2 Over-the-Air (OTA) updates

If your Landroid Vision is connected to your Wi-Fi network, you will be notified that new software is available via the APP. Once you confirm, the update will happen automatically Over-the-Air.

5.3 Manual updates

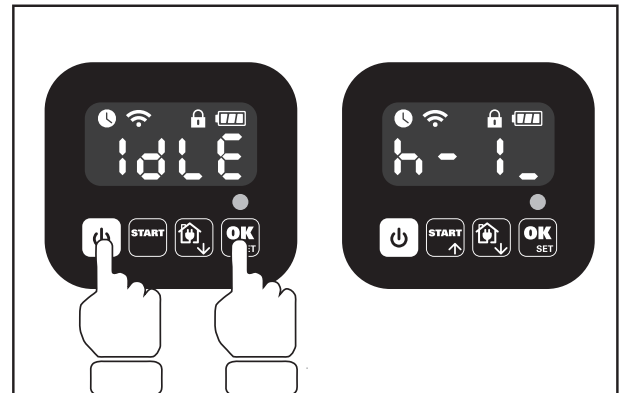
- If your Landroid Vision is not connected to your Wi-Fi network, you can still update it to the latest software version with a USB stick.
- Regularly visit the Worx Landroid Vision website to check if any new version is available. If you subscribed to Landroid Vision email list, you will be notified when a new version is available.
- Download the latest software version at our website.
- Take a blank USB stick formatted in **FAT32**.
- Save the file and extract the content to your USB stick.
- Make sure your Landroid Vision is getting charged.
- Place Landroid Vision on a secure and level surface.
- Turn off Landroid Vision.
- Open the battery cover of the Landroid Vision to access the USB port.
- Insert the USB stick in the port.
- Place Landroid Vision on the lawn again, inside the working area.
- Turn on Landroid Vision.
- Without lifting Landroid Vision, remove the USB stick when "USB" is displayed.
- The update will begin automatically and may take a while. Landroid Vision will restart automatically after the update is completed.

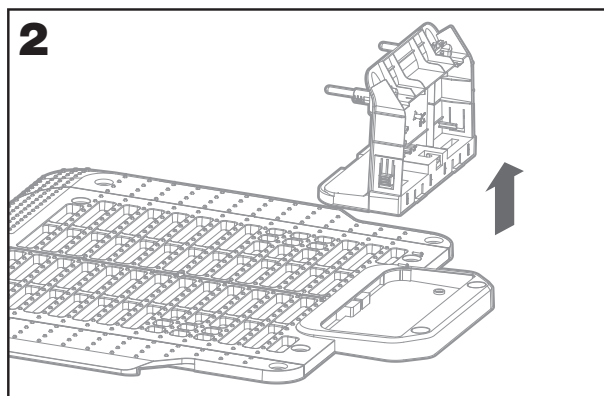
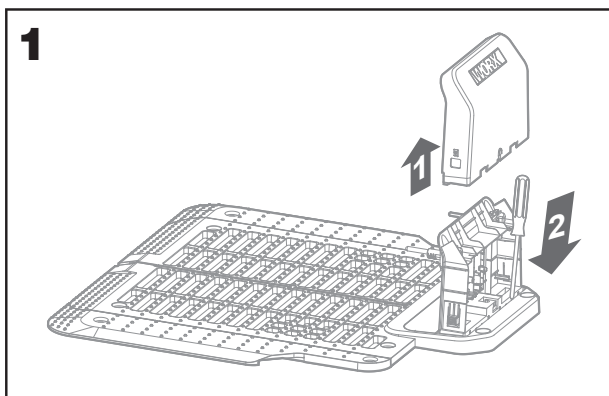
NOTE: Make sure Landroid Vision is charging or the battery capacity has reached 50% prior to starting the firmware update.

6. Remove the charging tower

- Simultaneously press the two clips on the charging tower cover to remove the charging tower cover. **(See Fig. 1)**
- Use a screwdriver against the charging tower pin, then remove the charging tower. **(See Fig. 1 - Fig. 2)**

NOTE: When Landroid Vision is not in use for a long time, removing and properly storing the charging tower can prolong the service life of the charging station





ERROR MESSAGES

Sometimes things can go wrong. Fortunately Landroid Vision is smart enough to tell you if it is encountering an issue, so you can fix it. If in doubt, please visit our website where you will find useful videos and further support.

| MESSAGE | CAUSE | ACTION |
|---------|---------------------|--|
| -EE- | Error unknown | Please contact Customer Services. |
| -F01 | Rain delay | Your Landroid Vision will start after the rain stops and the rain delay has expired. |
| -F02 | Low battery | The device is low on power and cannot meet the current work. Please charge it as soon as possible. |
| -E01 | Out of working area | If Landroid Vision is actually outside its working area: turn power off, take Landroid Vision inside its working area. Turn power on. Press START then OK . |
| -E02 | Wheels motor fault | Turn power off and take Landroid Vision to an area free from obstacles. Turn power on. Press START then OK . If the error message is still displayed, turn power off. Turn Landroid Vision upside-down and check if there's anything preventing the wheels from rotating. Remove any obstruction, turn Landroid Vision upright, turn power on. |
| -E03 | Blade motor fault | Turn power off. Turn Landroid Vision upside down, put on safety gloves to prevent injury and check if there's anything preventing the blade disc to rotate. Remove any obstruction. Turn Landroid Vision upright and take it to an area with short grass or adjust the cutting height. Turn power on. Press START then OK . |
| -E04 | Error trapped | Turn power off. Take Landroid Vision to an area in your lawn free of obstacles, turn power on. Press START then OK . If the error message is still displayed: turn power off, turn Landroid Vision upside-down. Check if there is anything preventing the wheels from rotating. Remove any obstruction, turn the Landroid Vision upright, turn power on. Press START then OK . |

| MESSAGE | CAUSE | ACTION |
|---------|-------------------------------------|---|
| -E05 | Error lifted | Turn power off. Take Landroid Vision to a lawn area clear of obstacles, turn power on. Press then . If the error message is still displayed: turn power off, turn Landroid Vision upside-down and check there's anything that can cause Landroid to be lifted up. Remove any possible object, turn Landroid upright, turn power on. Press then . |
| -E06 | Error Upside Down (tilted) | Turn Landroid Vision upright. |
| -E07 | Battery charge error | 1) Battery's temperature is too high (more than 55°C) when charging. Place the charging station in a shady area or wait until the temperature has cooled down. 2) Battery's temperature is too low. The outside temperature doesn't allow your Landroid Vision to work. It's time to recover it for winter time. 3) Poor connection: check the connection between the contact pins located on the charging station and the charging strip and that the charging base is on a perfect flat ground. 4) Power supply is broken: please contact Customer Services. |
| -E08 | Error find home timeout | 1) Charging station is badly placed (not on a flat ground), Landroid Vision doesn't find pins and doesn't stop. Check the station. 2) Landroid Vision runs out of battery before reaching the charging station. Take Landroid Vision back to the charging station. |
| -E09 | No map | 1) Make Sure the charging station is on your lawn (not indoor). 2) Take Landroid Vision back to the charging station. 3) Press then . 4) Landroid Vision circles in place once and then go to work. If your lawn has Multi-Zone and you have installed RFIDs, please add the zones and passages in the app. Landroid Vision will record the size and perimeter after completing the edge routine for the first time. |
| -E10 | Mower is locked | Need contact Customer Services to unlock. |
| -E11 | Battery temperature is out of range | The battery temperature is too high. When the temperature is lowered to 53°C, the machine will return to normal work. |
| -E12 | Camera is covered | Please clean the cover on the camera. |
| -E13 | Camera error | 1) Turn power off. 2) Take Landroid Vision to the charging station, and turn power on. 3) Press then . 4) If the problem cannot be solved, please contact Customer Services. |
| -E14 | Insufficient light | Landroid Vision would stop working when the light is too weak. |
| -E16 | Transition failure | Please check if the RFID installation is correct. Please ensure that there are no obstacles in the passage. |

NOTES

- Before turning power on, always check Landroid Vision is inside its working area.
- If for any reason—i.e. a party, children playing...—you want to park your Landroid Vision in the charging station: press then . Landroid Vision will go to its station and stay there. Please note Landroid Vision will now wait until the next scheduled mowing session. If you want to re-start it at anytime, press then to start your Landroid Vision.
- If an error repeatedly occurs in the same area of your lawn, you might have a problem with the working area so please refer to the installation instructions and check your set up is correct with its help.
- If your lawn is divided in two separated areas, connected by a corridor less than 1m wide, one of which is not provided with the charging station: when Landroid Vision runs out of charge, take it manually to the charging station.
- If Landroid Vision runs abnormally once in a while, please reset it by turning it off and removing the battery for 30 seconds, then

restart it. If the problem cannot be solved, please contact our Customer Service for help.

TROUBLESHOOTING

If your Landroid Vision does not work correctly, follow the trouble shooting guide below. If the fault persists, contact Customer Service.

| SYMPTOM | CAUSE | SOLUTION |
|---|---|---|
| The LED light on the charging pile does not turn on. | There is no power. | Check the charging station is connected properly to the charger and the charger is connected to a suitable power supply. |
| Landroid Vision turns on, but the blade disc does not spin. | Landroid Vision is searching for the charging station. | This is normal: when Landroid Vision needs to recharge, the blade disc does not rotate while it is searching for the charging station automatically. |
| Landroid Vision vibrates. | The blade disc is unbalanced. Blades may be damaged. | Check the blades and replace them if damaged. Remove debris and foreign objects from the blades and blade disc. |
| Grass is being cut unevenly. | Landroid Vision does not work enough hours per day to cut the grass. | Try adding more hours to the mowing schedule. |
| | Mowing area is too big for the size of Landroid Vision you have. | Try decreasing the size of the mowing area or increasing working time. |
| | The blades are dull and not sharp. | Change all the blades and screws in order to balance the blade disc. |
| | The cutting height is set too low for the length of the grass. | Raise the cutting height and then gradually lower. |
| | Grass or another object has wrapped around the blade disc. | Check the blade disc and remove any grass or other objects that might prevent it spinning. |
| | There is a build-up of grass in the blade disc or motor frame box. | Make sure the blade disc rotates easily. If need be, you may take off the blade disc and then remove the debris. |
| | Recognition error | Remove the obstacles, such as piles of leaves, weeds and wildflowers. |
| The secondary area is not mowed. | Programming error | Make sure the RFIDs are installed correctly and reprogrammed. |
| | There are obstacles between the RFIDs in the pathway. | Remove the obstacles. |
| | The boundary of the passage within 1.5 m range of the boundary wire for the RFID is curved. | Ensure that there is no boundary curved within 1.5 m range of the boundary wire for the RFID. |
| The charging time is far more than the rated charging time. | Poor connection caused by debris on the charging strip. | Clean the contact pins located on the charging pile and the charging strip on Landroid Vision using a cloth. |
| | The charging protection program is activated due to high temperature. | Place the charging station in a shady area or wait until the temperature has cooled down. |
| The mower does not charge. | There is no power. | Check the power cord is connected properly to the charger and the charger is connected to a suitable power supply. Make sure both the charging strips on the mower touch the center of the charging contacts on the charging pile. |

| SYMPTOM | CAUSE | SOLUTION |
|--|---|--|
| Landroid Vision is starting to have shorter run-times between charges. | Something is clogging in the blade disc creating friction and increasing power consumption. | Take off the blade disc and clean it. Maybe the grass is too high and too thick. |
| | Landroid Vision is shaking heavily because the blade disc is unbalanced. | Check the blade disc and blades, remove debris and foreign objects from the blades and blade disc. Replace the blades with a new set. |
| | The battery may be exhausted or old. | Replace battery. |
| | The working time is up. | Reset the working time. |
| Landroid Vision is not operating at the correct time. | The clock is not set to the correct time. | Set the clock to the correct time. |
| | Programmed cutting times for Landroid Vision are not correct. | Change the time settings for the mower to start and stop. |
| | The percentage of weekly operating time set through APP has changed. | Set the correct percentage through APP. |
| Landroid Vision can not find the charging station. | The direction of the charging station is incorrect. | Make sure Landroid Vision dock right towards the charging station and departures in anti-clockwise direction. |
| | There are obstacles in front of the charging station. | Please remove the obstacles within the 2 m in front of the charging station. |
| | The QR code is sheltered. | Make sure the QR code is clear and that there is nothing directly on it or above it. |
| Landroid Vision cannot correctly dock with the charging pile. | Environmental influences. | Restart Landroid Vision. |
| | Poor connection caused by debris on the charging strip. | Clean the contact pins located on the charging pile and the charging strip on Landroid Vision using a cloth. |
| The green light on the charging pile turns on before charging is complete. | The charging station is overheating or overcooling. | Place the charging station in a shady area or wait until it reaches the normal temperature. |
| Landroid Vision wheels skid or repeatedly slip. | Obstacles, such as twigs and branches may be lodged under Landroid Vision. | Remove objects from underside of Landroid Vision. |
| | The lawn is too wet. | Exclude the wet or soft ground areas by using the magnetic strip or by creating a non-grass pathway that is more than 5 cm wide until the lawn is dry again. |
| Landroid Vision slips out of its working area. | Low grip of Landroid Vision drive wheels. | Please check the wheels are clean and free of mud in order to have the maximum grip possible. |
| | The slope is steeper than 30% (17°). | Exclude the sloped area by using the magnetic strip or by creating a non-grass pathway that is more than 5 cm wide directly beside the slope. |
| | Recognition error. | Remove the obstacle if there is one. Using the magnetic strip or by creating a non-grass pathway that is more than 5 cm wide on the lawn edge ensure that the mower functions correctly. |
| | There is grass whose height is higher than 15 cm. | Trim the grass to below 15 cm. Lay magnetic strips or set up a 5 cm non-grass pathway if there are steps, cliffs or a pond below the grass. |

| SYMPTOM | CAUSE | SOLUTION |
|---|--|--|
| Landroid Vision frequently collides. | The grass is taller than 15 cm. | Trim the grass to below 15 cm. |
| | There is grass around suspended objects such as a hanging fence or a slide. | Lay magnetic strips or set up a 5 cm non-grass pathway around the area. |
| Landroid Vision operative system crashes when charging or on standby. | Software or display fault. | Restart Landroid Vision. |
| Landroid Vision shuts off when docking in the charging pile. | Landroid Vision fails to charge due to over temperature protection and is powered off. | Place the charging station in a shady area or wait until the temperature has cooled down. |
| | Poor connection. | Check the LED light on the charging pile. Check the connection between the contact pins located on the charging pile and the charging strip. |
| Landroid Vision stops in the working area. | There are continuous obstacles in the working area. | Lay magnetic strip or by creating a non-grass pathway that is more than 5 cm wide around the obstacles. |
| | The cutting height is set too low for the length of the grass or the grass is too dense. | Raise the cutting height and then gradually lower. |
| Landroid Vision flips over. | There is an inclined obstacle on the lawn. | Exclude the obstacle from Landroid Vision's working area. |
| Landroid Vision fails to connect to the internet. | Please check your router has the correct settings. | Make sure your router is 2.4GHz or 5GHz. If your router has two settings, please enable the 2.4GHz or 5GHz band. Make sure your router is set to 802.11 mode and wireless setting is b/g/n mixed. Make sure your router has the SSID Broadcast function enabled when you connect the machine with the APP. You can close it after you connect successfully. Make sure DHCP function is enabled. If you changed your Wi-Fi network, you need to connect Landroid Vision to the new network. If you have a "Fritz! box" router, please make sure activate "Allow communication between devices in same network" in the settings. |
| | Please check whether the router is disconnected or Wi-Fi SSID is changed. | Make sure the router is connected and Wi-Fi SSID is correct. |
| The software upgrade fails. | The Wi-Fi signal is weak. | Move closer to the router to strengthen the signal. |
| | The battery level is less than 50%. | Place Landroid Vision on the charging station or ensure that the battery level is above 50%. |

Environmental protection

Waste electrical products should not be disposed of with household waste. Please recycle where facilities exist. Check with your Local Authority or retailer for recycling advice.

Remove the used battery pack from the appliance and dispose of it at the most convenient recycling facility. If in doubt, consult your local environmental protection department.

We, Positec Technology (China) Co., Ltd, hereby declare, that the below product(s) covered in this document are in conformance with the applicable security requirements in Schedule 1 of The Product Security and Telecommunications Infrastructure (Security Requirements for Relevant Connectable Products) Regulations 2023 ("**Security Requirements**")

Please note that this statement of compliance, including the Defined Support Period stated herein, is only applicable to products sold in the UK.

Positec Technology (China) Co., Ltd welcomes input on potential software vulnerabilities so that we can take appropriate steps to maintain the security of our products and systems. Information on how to report security questions, issues or possible incidents to the Product Security Team can be found here:

Link: <https://security.positecgroup.com>

DECLARATION OF CONFORMITY

We,
Positec Germany GmbH
Postfach 680194, 50704 Cologne, Germany

On behalf of Positec declare that the product

Description **Robotic Lawnmower**

Type **WR202E (200-299 - designation of machinery, representative of Robotic lawn mower with Vision technology) (Serial number is placed on the back page) with battery charger WA3750.1 / WA3755.1 and charging base WA0515**

Function **Cutting grass**

Complies with the following Directives,

2006/42/EC, 2014/30/EU, 2014/35/EU, 2011/65/EU&(EU)2015/863, 2000/14/EC amended by 2005/88/EC, 2014/53/EU

2000/14/EC amended by 2005/88/EC

- Conformity Assessment Procedure as per
- Measured Sound Power Level
- Declared Guaranteed Sound Power Level

Annex V
58.19 dB (A)
60 dB (A)

Standards conform to,

For Lawn mower: EN 50636-2-107:2015+A1:2018+A2:2020+A3:2021, EN 60335-1:2012+A11:2014+A13:2017+A1:2019+A2:2019+A14:2019+A15:2021, EN IEC 62311:2020, EN IEC 55014-1:2021, EN IEC 55014-2:2021, EN IEC 61000-3-2:2019+A1:2021, EN 61000-3-3:2013+A1:2019+A2:2021

For Bluetooth & Wi-Fi module (2.4G): EN 301 489-1 V2.2.3, EN 301 489-17 V3.2.4, EN 300 328 V2.2.2

For Wi-Fi module (5G): EN 301 489-1 V2.2.3, EN 301 489-17 V3.2.4, EN 301 893 V2.1.1, EN 300 440 V2.2.1

For charger: EN IEC 55014-1:2021, EN IEC 55014-2:2021, EN IEC 61000-3-2:2019+A1:2021, EN 61000-3-3:2013+A1:2019+A2:2021, EN IEC 60335-2-29:2021+A1:2021, EN 60335-1:2012+A11:2014+A13:2017+A1:2019+A2:2019+A14:2019+A15:2021, EN 62233:2008

For RFID: EN 300 330 V2.1.1, EN 301 489-3 V2.3.2

For Noise: EN ISO 3744:1995

For RoHS: EN IEC 63000:2018

The person authorized to compile the technical file,

Name Marcel Filz

Address Positec Germany GmbH Postfach 680194, 50704 Cologne, Germany



2024/11/08

Allen Ding

Deputy Chief Engineer, Testing & Certification

Positec Technology (China) Co., Ltd

18, Dongwang Road, Suzhou Industrial

Park, Jiangsu 215123, P. R. China

DECLARATION OF CONFORMITY

We,
Positec (UK & Ireland) Ltd
PO BOX 6242, Newbury, RG14 9LT, UK

On behalf of Positec declare that the product

Description **Robotic Lawnmower**

Type **WR202E (200-299 - designation of machinery, representative of Robotic lawn mower with Vision technology) (Serial number is placed on the back page) with battery charger WA3750.1 / WA3755.1 and charging base WA0515**

Function **Cutting grass**

Complies with the following Regulations,

Supply of Machinery (Safety) Regulations 2008

Radio Equipment Regulations 2017

Electrical Equipment (Safety) Regulations 2016

Electromagnetic Compatibility Regulations 2016

The Restriction of the Use of Certain Hazardous Substances in Electrical and Electronic Equipment Regulations

2000/14/EC amended by 2005/88/EC

| | |
|--|---------------------|
| - Conformity Assessment Procedure as per | SCHEDULE 8 |
| - Measured Sound Power Level | 58.19 dB (A) |
| - Declared Guaranteed Sound Power Level | 60 dB (A) |

Standards conform to,

For Lawn mower: BS EN 50636-2-107:2015+A1:2018+A2:2020+A3:2021, BS EN 60335-1:2012+A11:2014 +A13:2017+A1:2019+A2:2019+A14:2019+A15:2021, BS EN IEC 62311:2020, BS EN IEC 55014-1:2021, BS EN IEC 55014-2:2021, BS EN IEC 61000-3-2:2019+A1:2021, BS EN 61000-3-3:2013+A1:2019+A2:2021
For Bluetooth & Wi-Fi module (2.4G): BS EN 301 489-1 V2.2.3, BS EN 301 489-17 V3.2.4, BS EN 300 328 V2.2.2

For Wi-Fi module (5G): BS EN 301 489-1 V2.2.3, BS EN 301 489-17 V3.2.4, BS EN 301 893 V2.1.1, BS EN 300 440 V2.2.1

For charger: BS EN IEC 55014-1:2021, BS EN IEC 55014-2:2021, BS EN IEC 61000-3-2:2019+A1:2021, BS EN 61000-3-3:2013+A1:2019+A2:2021, BS EN IEC 60335-2-29:2021+A1:2021, BS EN 60335-1:2012+A11:2014+A13:2017+A1:2019+A2:2019+A14:2019+A15:2021, BS EN 62233:2008

For RFID: BS EN 300 330 V2.1.1, BS EN 301 489-3 V2.3.2

For Noise: BS EN ISO 3744:1995

For RoHS: BS EN IEC 63000:2018

The person authorized to compile the technical file,

Name **Jim Kirkwood**

Address **Positec (UK & Ireland) Ltd PO BOX 6242, Newbury, RG14 9LT, UK**



2024/11/08

Allen Ding

Deputy Chief Engineer, Testing & Certification

Positec Technology (China) Co., Ltd

18, Dongwang Road, Suzhou Industrial

Park, Jiangsu 215123, P. R. China

