



中国认可
国际互认
检测
TESTING
CNAS L2929

Test Report

No.T52110220912TC

Date: JAN 20, 2021

Page 1 of 7

LEILONG TOYS FACTORY
CHENGHAI DISTRICT, SHANTOU CITY, GUANGDONG PROVINCE, CHINA

The following samples were submitted and identified by/on behalf of the client as:

TOY SERIES

Client Reference Information : A1001-1,A1001-2,A1001-3,A1001-4,A1001-5,A1001-6,A1001-7,
A1001-8,A1002-1,A1002-2,A1002-3,A1002-4,A1002-5,A1002-6,
A1002-7,A1002-8,A1003-1,A1003-2,A1003-3,A1003-4,A1003-5,
A1003-6,A1003-7,A1003-8,A1004-1,A1004-2,A1004-3,A1004-4,
A1004-5,A1004-6,A1004-7,A1004-8,A1005-1,A1005-2,A1005-3,
A1005-4,A1005-5,A1005-6,A1005-7,A1005-8,A1006-1,A1006-2,
A1006-3,A1006-4,A1006-5,A1006-6,A1006-7,A1006-8,A1007-1,
A1007-2,A1007-3,A1007-4,A1007-5,A1007-6,A1007-7,A1007-8,
A1008-1,A1008-2,A1008-3,A1008-4,A1008-5,A1008-6,A1008-7,
A1008-8,A1009-1,A1009-2,A1009-3,A1009-4,A1009-5,A1009-6,
A1009-7,A1009-8,A1010-1,A1010-2,A1010-3,A1010-4,A1010-5,
A1010-6,A1010-7,A1010-8

Sample Receiving Date : JAN 15, 2021

Testing Period : JAN 15, 2021 TO JAN 20, 2021

Test Requested		Conclusion
1.	European Regulation (EC) No. 1907/2006 (REACH) Annex XVII and its amendments – Cadmium content in the specified specimen(s) as listed	PASS

***** FOR FURTHER DETAILS, PLEASE REFER TO THE FOLLOWING PAGE(S) *****

Signed for and on behalf of
SGS-CSTC Standards Technical
Services Co., Ltd. Shenzhen Branch Testing Center

scan to see the report



T52110220912TC

Qu Ping, Kiky
Dept. Manager
CNAS Approved Signatory



Unless otherwise agreed in writing, this document is issued by the Company subject to its General Conditions of Service printed overleaf, available on request or accessible at <http://www.sgs.com/en/Terms-and-Conditions.aspx> and, for electronic format documents, subject to Terms and Conditions for Electronic Documents at <http://www.sgs.com/en/Terms-and-Conditions/Terms-e-Documents.aspx>. Attention is drawn to the limitation of liability, indemnification and jurisdiction issues defined therein. Any holder of this document is advised that information contained hereon reflects the Company's findings at the time of its intervention only and within the limits of Client's instructions, if any. The Company's sole responsibility is to its Client and this document does not exonerate parties to a transaction from exercising all their rights and obligations under the transaction documents. This document cannot be reproduced except in full, without prior written approval of the Company. Any unauthorized alteration, forgery or falsification of the content or appearance of this document is unlawful and offenders may be prosecuted to the fullest extent of the law. Unless otherwise stated the results shown in this test report refer only to the sample(s) tested and such sample(s) are retained for 30 days only.

Attention: To check the authenticity of testing / inspection report & certificate, please contact us at telephone: (86-755) 8307 1443, or email: CN.Doccheck@sgs.com

SGS-CSTC Standards Technical Services Co., Ltd.
Shenzhen Branch Testing Center Hardlines

SGS Bldg, No. 4, Jianghao Industrial Park, No. 430, Jihua Road, Banlan, Longgang District, Shenzhen, China 518129 t (86-755) 25328888 f (86-755) 83106190 www.sgs.com.cn
中国·深圳·龙岗区坂田吉华路430号江灏工业园4栋SGS大楼 邮编: 518129 t (86-755) 25328888 f (86-755) 83106190 e sgs.china@sgs.com

Results:

1. European Regulation (EC) No. 1907/2006 (REACH), Annex XVII and its Amendments – Cadmium Content

Method (non-metallic materials): With reference to CPSC-CH-E1002-08.3

For Plastic

Test Item(s)	Cadmium (Cd)		
Permissible Limit (mg/kg)	100		
Specimen Description	Alias No.	Tracing No.	Result(s) (mg/kg)
1. White plastic (Food) + Red plastic (Fruit) + Green plastic (Vegetable)	1	1	ND
2. Dark blue plastic (Clip) + Yellow plastic (Clothes) + Dark green plastic (Food)	1	2	ND
3. Cyan plastic (Tool) + Orange plastic (Fruit) + Cream plastic (Food)	1	3	ND

- Note:
- Permissible and Reference Limit specified by Commission Regulation (EU) No 494/2011 & Commission Regulation (EU) No 2016/217 amending Annex XVII of REACH Regulation (EC) No 1907/2006 (previously restricted under entry 23 of Regulation (EC) No 552/2009 and directive 91/338/EC).
 - mg/kg = milligram per kilogram
 - ND = Not Detected (lower than MDL)
 - MDL = Method Detection Limit = 5 mg/kg
 - 1% = 10000 mg/kg = 10000 ppm
 - The result(s) is (are) calculated using the minimum specimen weight for composite test



Unless otherwise agreed in writing, this document is issued by the Company subject to its General Conditions of Service printed overleaf, available on request or accessible at <http://www.sgs.com/en/Terms-and-Conditions.aspx> and, for electronic format documents, subject to Terms and Conditions for Electronic Documents at <http://www.sgs.com/en/Terms-and-Conditions/Terms-e-Documents.aspx>. Attention is drawn to the limitation of liability, indemnification and jurisdiction issues defined therein. Any holder of this document is advised that information contained hereon reflects the Company's findings at the time of its intervention only and within the limits of Client's instructions, if any. The Company's sole responsibility is to its Client and this document does not exonerate parties to a transaction from exercising all their rights and obligations under the transaction documents. This document cannot be reproduced except in full, without prior written approval of the Company. Any unauthorized alteration, forgery or falsification of the content or appearance of this document is unlawful and offenders may be prosecuted to the fullest extent of the law. Unless otherwise stated the results shown in this test report refer only to the sample(s) tested and such sample(s) are retained for 30 days only.

Attention: To check the authenticity of testing / inspection report & certificate, please contact us at telephone: (86-755) 8307 1443, or email: CN.Doccheck@sgs.com

SGS Bldg, No. 4, Jianghao Industrial Park, No. 430, Jihua Road, Banlan, Longgang District, Shenzhen, China 518129 t (86-755) 25328888 f (86-755) 83106190 www.sgsgroup.com.cn
 中国·深圳·龙岗区坂田吉华路430号江灏工业园4栋SGS大楼 邮编: 518129 t (86-755) 25328888 f (86-755) 83106190 e sgs.china@sgs.com

Remark 1: Since the data and / or information above division line of front page is provided by the applicant, the relevant results or conclusions of this report are only made for these data and / or information, SGS shall not be responsible for the authenticity and integrity of such data and information and the validity of the results and / or conclusions arising therefrom. Testing results only apply to the sample as received.

Remark 2: The statement of conformity has considered the decision rule based on the Guarded acceptance (8.3.2 of ISO/IEC GUIDE 98-4:2012)- When the measured value falls within the guard band, only the test data and measurement uncertainty will be reported. The guard band is equal to the expanded measurement uncertainty with a 95% coverage probability($k=2$), $w = U_{95}$. The Probability of False Accept and the Probability of False Reject of the decision rule are 2.5%.

For Upper Tolerance Limit (T_U):

Pass - when the measurement result is below $T_U - U_{95}$

Fail - when the measurement result is above $T_U + U_{95}$

Inconclusive - when the measurement result is falling in guard band $[T_U - U_{95}, T_U + U_{95}]$

For Lower Tolerance Limit (T_L):

Pass - when the measurement result is above $T_L + U_{95}$

Fail - when the measurement result is below $T_L - U_{95}$

Inconclusive - when the measurement result is falling in guard band $[T_L - U_{95}, T_L + U_{95}]$



Sample Picture (As received)

Pic.1



Pic.2



Pic.3



Pic.4



Unless otherwise agreed in writing, this document is issued by the Company subject to its General Conditions of Service printed overleaf, available on request or accessible at <http://www.sgs.com/en/Terms-and-Conditions.aspx> and, for electronic format documents, subject to Terms and Conditions for Electronic Documents at <http://www.sgs.com/en/Terms-and-Conditions/Terms-e-Documents.aspx>. Attention is drawn to the limitation of liability, indemnification and jurisdiction issues defined therein. Any holder of this document is advised that information contained hereon reflects the Company's findings at the time of its intervention only and within the limits of Client's instructions, if any. The Company's sole responsibility is to its Client and this document does not exonerate parties to a transaction from exercising all their rights and obligations under the transaction documents. This document cannot be reproduced except in full, without prior written approval of the Company. Any unauthorized alteration, forgery or falsification of the content or appearance of this document is unlawful and offenders may be prosecuted to the fullest extent of the law. Unless otherwise stated the results shown in this test report refer only to the sample(s) tested and such sample(s) are retained for 30 days only.

Attention: To check the authenticity of testing / inspection report & certificate, please contact us at telephone: (86-755) 8307 1443, or email: CN.Doccheck@sgs.com

SGS Bldg, No. 4, Jianghao Industrial Park, No. 430, Jihua Road, Banlan, Longgang District, Shenzhen, China 518129 t (86-755) 25328888 f (86-755) 83106190 www.sgsgroup.com.cn
 中国·深圳·龙岗区坂田吉华路430号江灏工业园4栋SGS大楼 邮编: 518129 t (86-755) 25328888 f (86-755) 83106190 e sgs.china@sgs.com

Sample Picture (As received)

Pic.5



Pic.6



Pic.7



Pic.8



Sample Picture (As received)

Pic.9



Pic.10



Pic.11



Pic.12



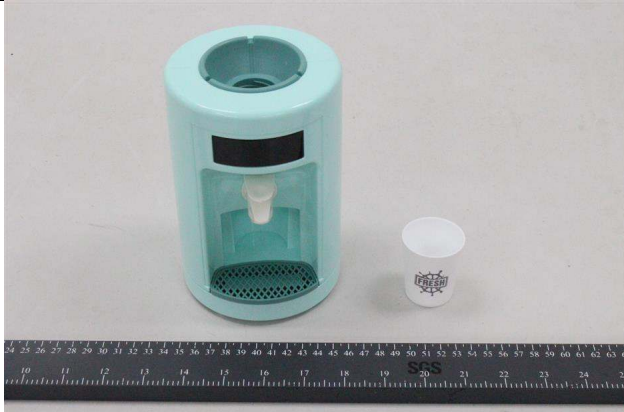
Unless otherwise agreed in writing, this document is issued by the Company subject to its General Conditions of Service printed overleaf, available on request or accessible at <http://www.sgs.com/en/Terms-and-Conditions.aspx> and, for electronic format documents, subject to Terms and Conditions for Electronic Documents at <http://www.sgs.com/en/Terms-and-Conditions/Terms-e-Documents.aspx>. Attention is drawn to the limitation of liability, indemnification and jurisdiction issues defined therein. Any holder of this document is advised that information contained hereon reflects the Company's findings at the time of its intervention only and within the limits of Client's instructions, if any. The Company's sole responsibility is to its Client and this document does not exonerate parties to a transaction from exercising all their rights and obligations under the transaction documents. This document cannot be reproduced except in full, without prior written approval of the Company. Any unauthorized alteration, forgery or falsification of the content or appearance of this document is unlawful and offenders may be prosecuted to the fullest extent of the law. Unless otherwise stated the results shown in this test report refer only to the sample(s) tested and such sample(s) are retained for 30 days only.

Attention: To check the authenticity of testing / inspection report & certificate, please contact us at telephone: (86-755) 8307 1443, or email: CN.Doccheck@sgs.com

SGS Bldg, No. 4, Jianghao Industrial Park, No. 430, Jihua Road, Banlan, Longgang District, Shenzhen, China 518129 t (86-755) 25328888 f (86-755) 83106190 www.sgsgroup.com.cn
中国·深圳·龙岗区坂田吉华路430号江源工业园4栋SGS大楼 邮编: 518129 t (86-755) 25328888 f (86-755) 83106190 e sgs.china@sgs.com

Sample Picture (As received)

Pic.13



Pic.14



Pic.15



Pic.16



Pic.17



SGS authenticate the photo on original report only

*** End of Report ***



Unless otherwise agreed in writing, this document is issued by the Company subject to its General Conditions of Service printed overleaf, available on request or accessible at <http://www.sgs.com/en/Terms-and-Conditions.aspx> and, for electronic format documents, subject to Terms and Conditions for Electronic Documents at <http://www.sgs.com/en/Terms-and-Conditions/Terms-e-Documents.aspx>. Attention is drawn to the limitation of liability, indemnification and jurisdiction issues defined therein. Any holder of this document is advised that information contained hereon reflects the Company's findings at the time of its intervention only and within the limits of Client's instructions, if any. The Company's sole responsibility is to its Client and this document does not exonerate parties to a transaction from exercising all their rights and obligations under the transaction documents. This document cannot be reproduced except in full, without prior written approval of the Company. Any unauthorized alteration, forgery or falsification of the content or appearance of this document is unlawful and offenders may be prosecuted to the fullest extent of the law. Unless otherwise stated the results shown in this test report refer only to the sample(s) tested and such sample(s) are retained for 30 days only.
Attention: To check the authenticity of testing / inspection report & certificate, please contact us at telephone: (86-755) 8307 1443, or email: CN.Doccheck@sgs.com
 SGS Bldg, No. 4, Jiahao Industrial Park, No. 430, Jihua Road, Banlan, Longgang District, Shenzhen, China 518129 t (86-755) 25328888 f (86-755) 83106190 www.sgs.com.cn
 中国·深圳·龙岗区坂田吉华路430号江灏工业园4栋SGS大楼 邮编: 518129 t (86-755) 25328888 f (86-755) 83106190 e sgs.china@sgs.com