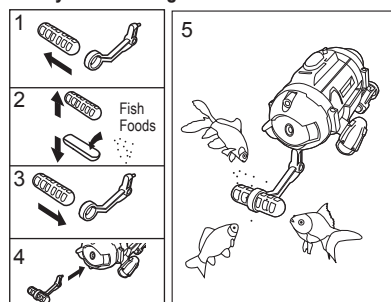
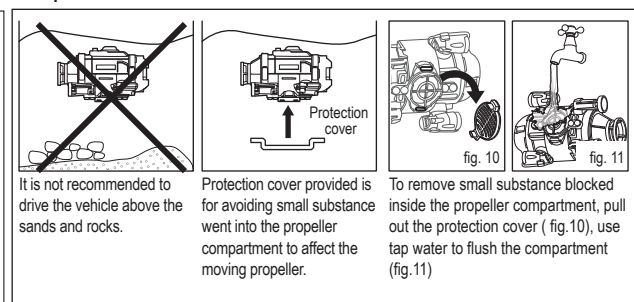


7.4 Play with Feeding device



7.5 Tips & Maintenance



It is not recommended to drive the vehicle above the sands and rocks.

Protection cover provided is for avoiding small substance went into the propeller compartment to affect the moving propeller.

To remove small substance blocked inside the propeller compartment, pull out the protection cover (fig.10), use tap water to flush the compartment (fig.11)

8. Troubleshooting

Symptom	Cause	Correction
AQUACAM does not react, or react poorly to operation by transmitter.	- Had not pairing transmitter and AQUACAM. - Dived too deep and sucked at the bottom.	- Re-pairing transmitter and AQUACAM. - Push the throttle stick to Minimum throttle position to stop AQUACAM and drive again.
AQUACAM runs slowly or does not run.	- The AQUACAM and/ or the transmitter is switch off ("OFF"). - The battery of the AQUACAM is weak. - Sundries involved in propeller	- Set the power switch to "ON" - Change the battery of the AQUACAM. - Remove the sundries.
Loss of control.	- Another infrared control device using the same frequency band. - Affected by strong lighting.	- Avoid these if possible, or choose another place to operate the AQUACAM. - Change another environment to avoid direct lighting.
The video/ photo was not recorded. The status indicator flashes continuously.	- The battery of the AQUACAM is weak. - The memory card is full.	- Change the battery of the AQUACAM. - Download the video and photos to your computer to leave empty space for other shooting

AQUACAM HD™

Facebook logo: Become our fan on facebook facebook.com/SilverlitToys

Visit us at www.Silverlit.com

AQUACAM HD

For ages 5+



WARNING:
CHOKING HAZARD - Small parts.
Not for Children under 3 years.

Delivery contents



Precautions, Warnings & Statements

Waste Electrical and Electronic Equipment (WEEE)
When this appliance is out of use, please remove all batteries and dispose of them separately. Bring electrical appliances to the local collecting points for waste electrical and electronic equipment. Other components can be disposed of in domestic refuse.

Warning: Conversion or modifications to this product not expressly approved by the party responsible for compliance could void the user's authority to operate the product.
- Photographing or video recording should only take place with the consent from all involved parties.

Special notes to adults:
- Before first use, Read the user's information together with your child.
- Do not change or modify anything on the AQUACAM.
- Assembly should be performed under adult supervision (changing batteries/ spare parts, trimming etc).
- Parental guidance is recommended when installing or replacing batteries.

Battery warnings:
- Non-rechargeable batteries are not to be recharged.
- Rechargeable batteries are to be removed before being charged.
- Rechargeable batteries are only to be charged under adult supervision.
- Different types of batteries or new and used batteries are not to be mixed.
- Only batteries of the same or equivalent type as recommended are to be used.
- Batteries are to be inserted with correct polarity (+ and -)
- Exhausted batteries are to be removed from the toy.
- The supply terminals are not to be short-circuited.
- Do not mix old and new batteries.
- Do not mix alkaline, standard (carbon-zinc) or rechargeable (nickel-cadmium) batteries.

Notes:
- New alkaline batteries are recommended to use in this toy to obtain best and maximum performance.

FCC Statements

This device complies with part 15 of the FCC rules. Operation is subject to the following two conditions:
1) This device may not cause harmful interference, and
2) This device must accept any interference received, including interference that may cause undesired operation.
NOTE: This equipment has been tested and found to comply with the limits for a Class B digital device, pursuant to Part 15 of the FCC Rules. These limits are designed to provide reasonable protection against harmful interference in a residential installation. However, there is no guarantee that interference will not occur in a particular installation. If this equipment does cause harmful interference to radio or television reception, which can be determined by turning the equipment off and on, the user is encouraged to:
- Reorient or relocate the receiving antenna.
- Increase the separation between the equipment and receiver.
- Connect the equipment into an outlet on a circuit different from that to which the receiver is connected.
- Consult the dealer or an experienced radio/TV technician for help.

Care and Maintenance:

- Always remove batteries from the toy when it is not being used for a long period of time.
- Wipe the toy gently with a clean damp cloth.
- Keep the toy away from direct heat.
- Do not submerge the submarine into water unless the battery compartment is properly closed and locked.
- The toy is to be operated in water only when fully assembled in accordance with the instructions.

Tip! Safety hints

- Controlling and Driving the AQUACAM requires skill and children must be trained under the direct supervision of an adult.
- For toys intended to be assembled by the child: Check if the toy is assembled as instructed. The assembly shall be performed under the supervision of an adult.
- Never operate this product if it has damaged parts.
- Always switch off the AQUACAM and the transmitter when not operating.
- Warning! Do not touch the running propellers. Keep hands, hair and loose clothes away from moving parts to avoid injury.
- Do not hold or throw any objects in the running propeller.
- Instruction sheet and packaging must be retained since it contains important information.

The normal function of the product may be disturbed by Strong Electro Magnetic Interference. If so, simply reset the product to resume normal operation by following the instruction manual. In case the function could not resume, please use the product in other location.

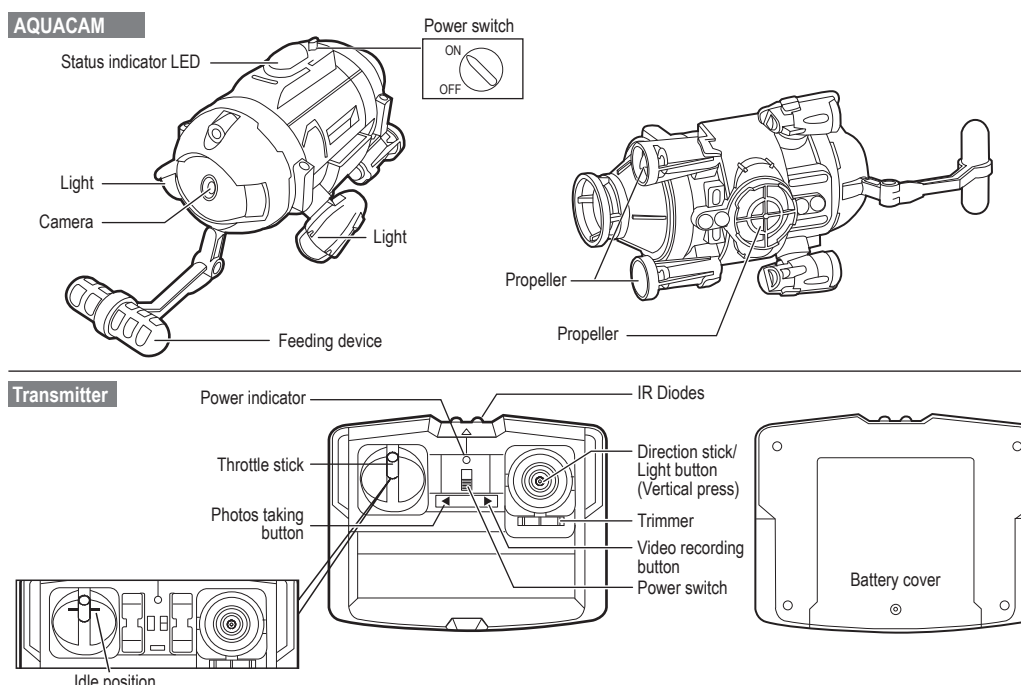
Battery requirement (Transmitter):

Power Supply : DC 6 V, 0.5 W
Rating : DC 6 V, 0.5 W
Batteries : 4 x 1.5 V "AA"/LR6/AM3 (not included)

Battery requirement (AQUACAM):

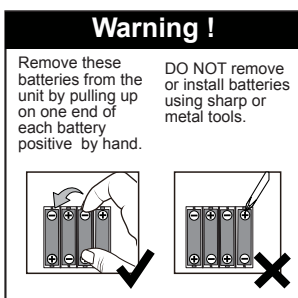
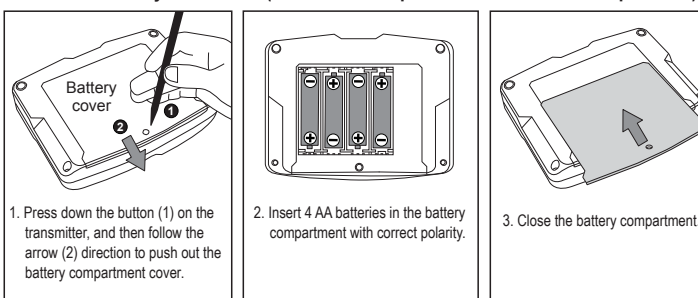
Power Supply : DC 3 V, 1.5 W
Rating : DC 3 V, 1.5 W
Batteries : 2 x 1.5 V "AA"/LR6/AM3 (not included)

Part Identification



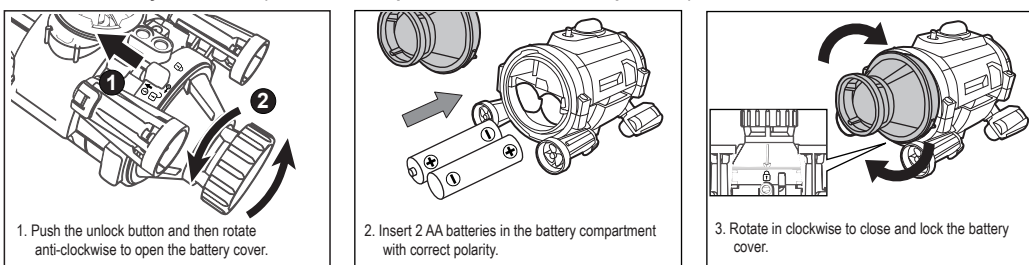
4. Battery Installation

Transmitter Battery Installation (*Make sure the power switch is on "OFF" position.)



Note: When the power indicator on the transmitter starts blinking replace the batteries.

AQUACAM Battery Installation (*Make sure the power switch is on "OFF" position.)



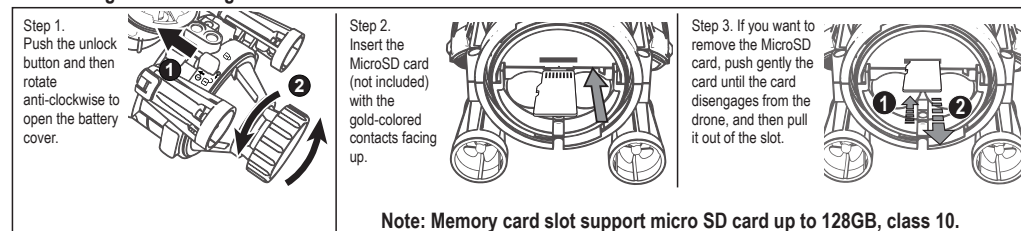
5. Photos taking / Video recording

Press the photos taking button to take photo through the camera on the AQUACAM. The status indicator will flash once in red when a photo is taken. Press the video recording button to start recording video. Press the button again to stop recording. The status indicator will turn on in red during recording.

Tip! - If status indicator LED keeps flashing in red, it indicates the memories are fully occupied. Please save and remove photos / videos from the memory. If status indicator LED keeps flashing in green, it indicates low batteries, please change new batteries.

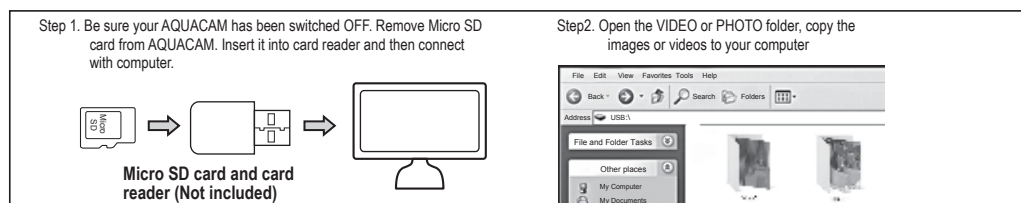
6. Transferring files to computer

6.1 Inserting and removing the MicroSD



Note: Memory card slot support micro SD card up to 128GB, class 10.

6.2 To stored photos and videos



7. Diving Your AQUACAM

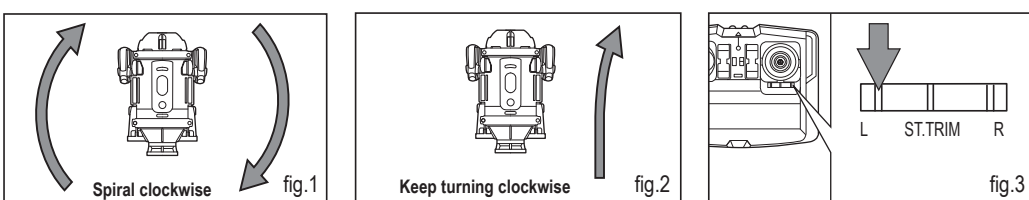
Tip! Piloting hints

- For the novice pilot (after the trimming procedure is completed), it is highly recommended to focus exclusively on learning to control the throttle stick first. If the AQUACAM turns around by itself there is no need to keep it straight. For the first dive, it is important to learn to keep the AQUACAM at a constant depth with very gentle inputs on the throttle stick. Once the pilot masters this, he may start learning to take control with the direction stick.
- Don't operate the AQUACAM under the direct bright light it will affect the control system of your AQUACAM.
- Don't cover the IR diodes of the transmitter as it will block the IR signal.
- Don't stick any other label onto the AQUACAM as it will affect receiving of IR signal.
- Operate only in calm, clear and shallow water for the AQUACAM. Shallow fish ponds without rocks and sands are recommended.

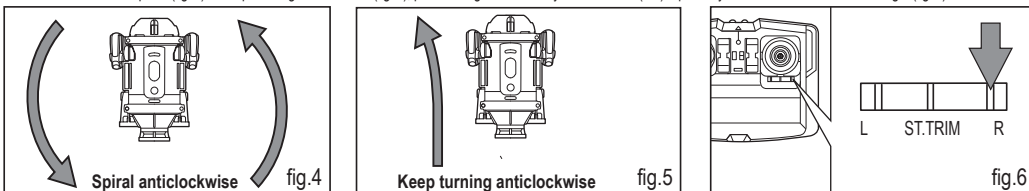
- Set the power switch on AQUACAM to "ON", the LED in the canopy will flash.

7.1. Trimming the AQUACAM:

- When the AQUACAM spirals (fig. 1) or keeps turning clockwise (fig. 2), press the left side of the yaw trim button ("L") repeatedly until the AQUACAM dives straight (fig. 3).



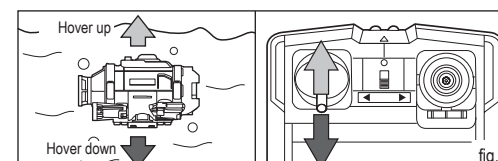
- When the AQUACAM spirals (fig. 4) or keeps turning anticlockwise (fig. 5), press the right side of the yaw trim button ("R") repeatedly until the AQUACAM dives straight (fig. 6).



7.2. Diving control

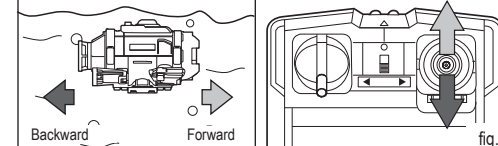
Hover up and down:

You can slowly push the throttle stick below the idle position to dive in lower level, or slowly push the throttle stick above the idle position to float in higher level. Only small amounts of stick position change are required for smooth diving. (fig.7)



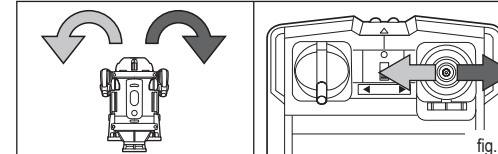
Forward and backward driving:

Push the direction stick upward to drive the AQUACAM forward. Push it downward to drive the AQUACAM backward. (fig.8)



Turn left and right:

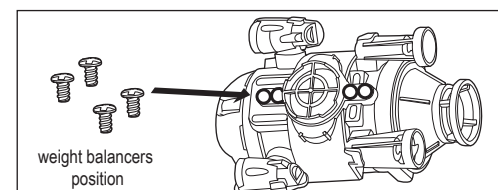
Push the direction stick toward left to turn the AQUACAM anticlockwise, and push the direction stick toward right to turn it clockwise. (fig.9)



Notes: Transmitter is not waterproof, do not submerge in the water.

7.3 Play in Salty water

If playing in saltwater, please screw up 4pcs weight balancers (included) to increase weight of the AQUACAM to make sure it can be played normally.



Warning! This is not a life saving and adventure device. Only to be used in water which the child is under adult supervision