

TX1 Pro Treadmill



English

Manual

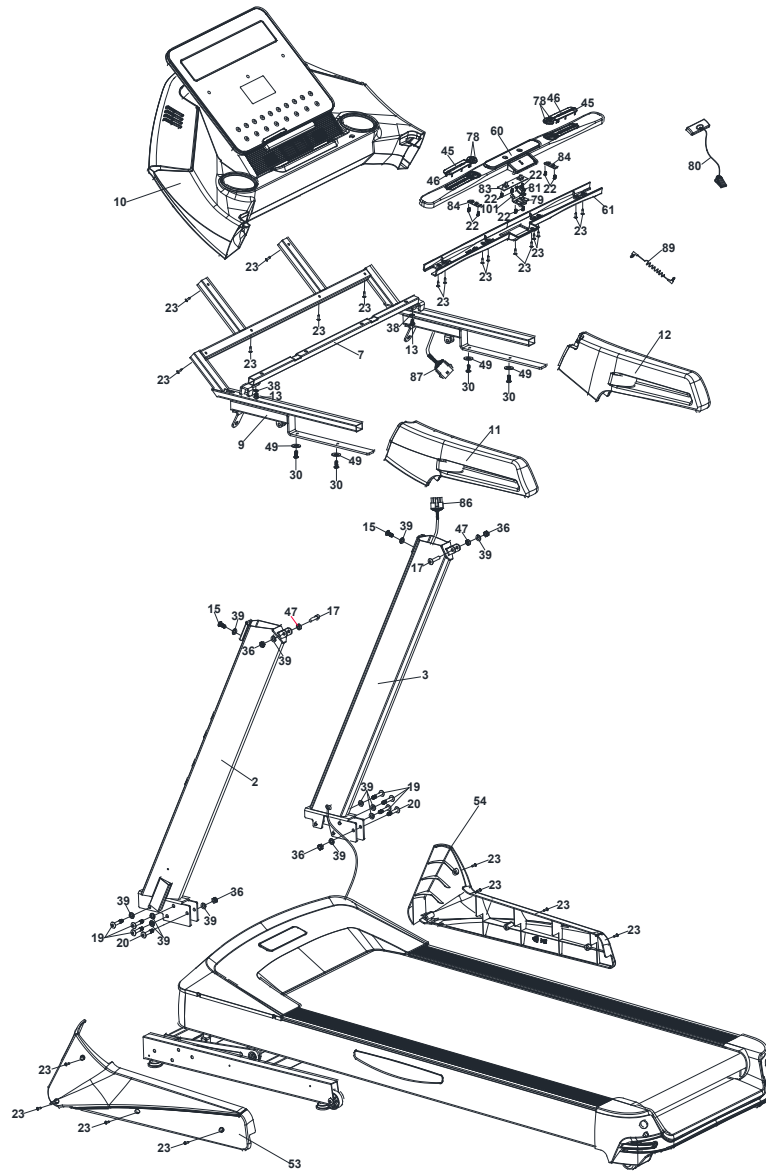
1 - 20

Dansk

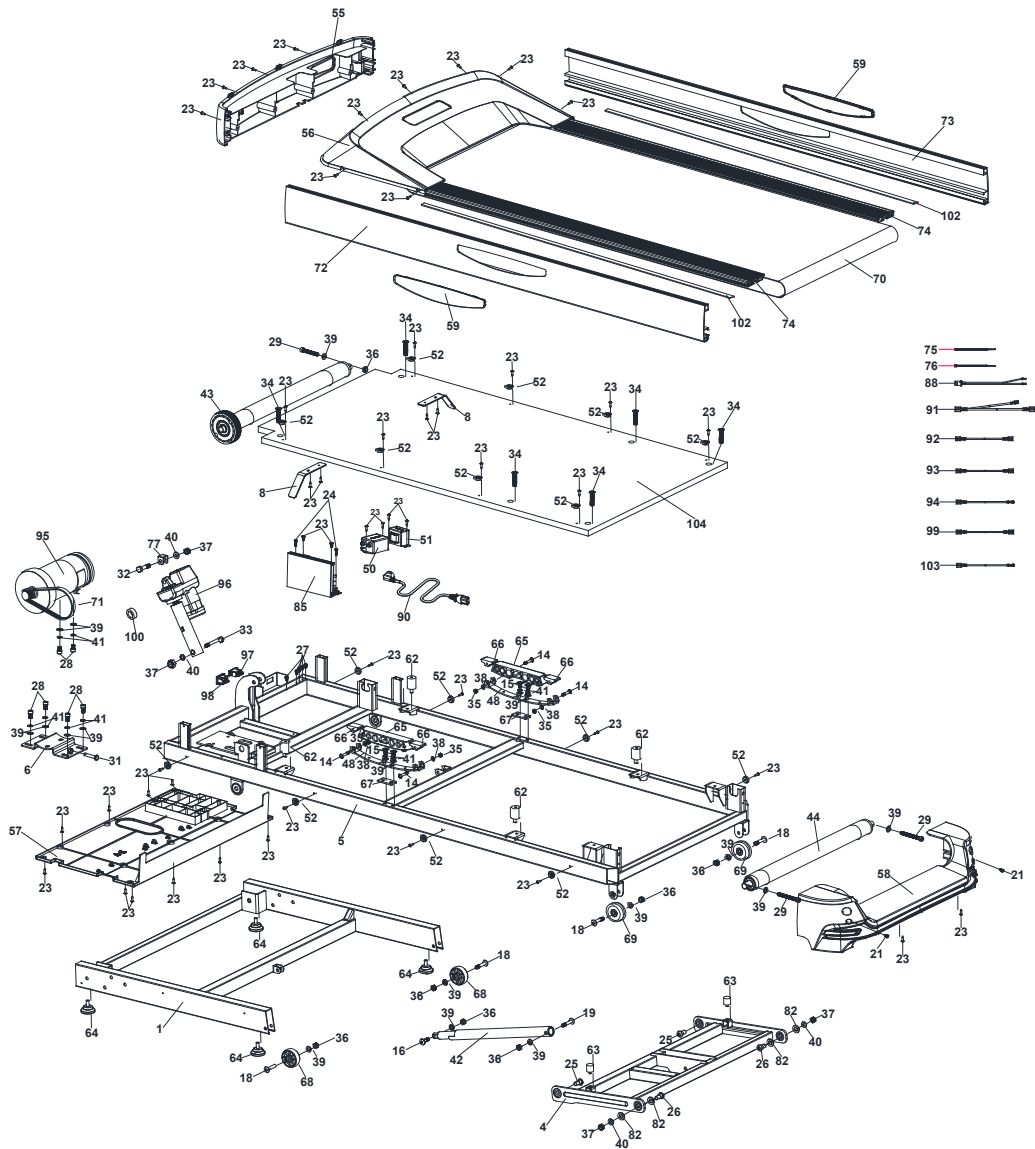
Brugsanvisning

21- 38

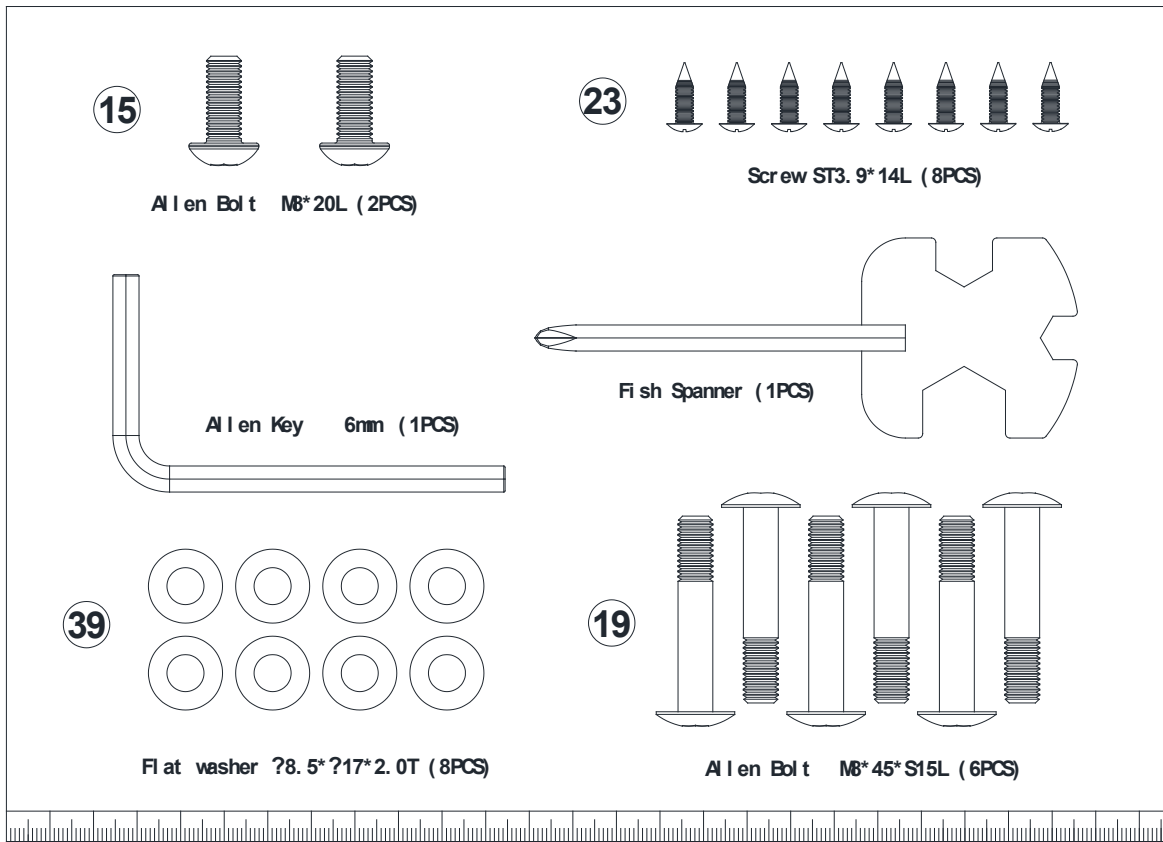
Exploded view



Exploded view



Tools



Spare parts list

| No. | Name | Spec. | Texture | Unit | Dosage | Remark |
|-----|----------------------|-------------------|---------|------|--------|--------|
| 1 | frame | | | SET | 1 | |
| 2 | upright-L | | | SET | 1 | |
| 3 | upright-R | | | SET | 1 | |
| 4 | incline frame | | | SET | 1 | |
| 5 | main frame | | | SET | 1 | |
| 6 | motor seat | | | SET | 1 | |
| 7 | middle handle tube | | | SET | 1 | |
| 8 | belt hook | | | PCS | 2 | |
| 9 | computer fixed mount | | | SET | 1 | |
| 10 | computer set | | | SET | 1 | |
| 11 | handlerrail-L | 540*180*80 | PU | PCS | 1 | |
| 12 | handlerrail-R | 540*180*80 | PU | PCS | 1 | |
| 13 | screw | M6*16L | S45C | PCS | 2 | |
| 14 | screw | M6*43L*S11L | S45C | PCS | 4 | |
| 15 | screw | M8*P1.25*20L | S45C | PCS | 6 | |
| 16 | screw | M8*30L | S45C | PCS | 1 | |
| 17 | screw | M8*P1.25*36L*S15L | S45C | PCS | 2 | |
| 18 | screw | M8*40L*S18L | S45C | PCS | 4 | |
| 19 | screw | M8*45L | S45C | PCS | 7 | |
| 20 | screw | M8*50L*S20L | S45C | PCS | 2 | |
| 21 | screw | M4*12L | S45C | PCS | 2 | |
| 22 | screw | ST2.9*8L | S45C | PCS | 9 | |
| 23 | screw | ST3.9*14L | S45C | PCS | 69 | |

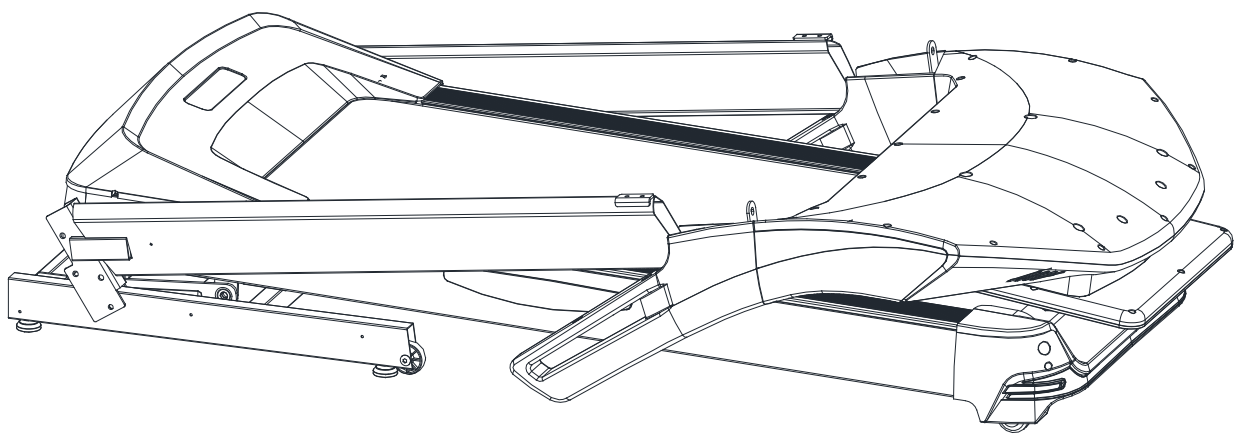
| | | | | | | |
|----|---------------------|--------------------------|------|-----|----|--|
| 24 | screw | ST3.9*20L | S45C | PCS | 2 | |
| 25 | screw | φ12*M10*28L | 45# | PCS | 2 | |
| 26 | screw | φ12*10L*M10*30L | 45# | PCS | 2 | |
| 27 | screw | M4*10L | S45C | PCS | 5 | |
| 28 | screw | M8*16L | S45C | PCS | 6 | |
| 29 | screw | M8*55L | S45C | PCS | 3 | |
| 30 | screw | M6*10L | S45C | PCS | 4 | |
| 31 | screw | M8*P1.25*30L | S45C | PCS | 1 | |
| 32 | screw | M10*50L | S45C | PCS | 1 | |
| 33 | screw | M10*60L*S15L | S45C | PCS | 1 | |
| 34 | screw | M8*25L | S45C | PCS | 6 | |
| 35 | mylon nut | M6*5.5T | S20C | PCS | 4 | |
| 36 | mylon nut | M8*7T | S20C | PCS | 10 | |
| 37 | mylon nut | M10*10T | S20C | PCS | 4 | |
| 38 | flat washer | φ6.5*φ13*1.5T | S20C | PCS | 6 | |
| 39 | flat washer | φ8.5*φ17*2T | S20C | PCS | 31 | |
| 40 | flat washer | φ10*φ20*2T | S20C | PCS | 4 | |
| 41 | spring washer | φ8.5*φ13.5*2.5T | S20C | PCS | 10 | |
| 42 | air pressure bar | QDY22*10-714*281-40KG | | PCS | 1 | |
| 43 | front roller | φ95*φ48*φ17*610.5(618.5) | | PCS | 1 | |
| 44 | rear roller | φ46*φ39*φ17*595(612) | | PCS | 1 | |
| 45 | handle steel disc-L | 109*10.5*T0.5 | | PCS | 2 | |
| 46 | handle steel disc-R | 109*10.5*T0.5 | | PCS | 2 | |
| 47 | drive pipe | HR φ12.7*φ8.2*11 | Q235 | PCS | 2 | |
| 48 | spring steel | 63*254*T3.5 | 65Mn | PCS | 2 | |
| 49 | flat washer | φ6*φ18*1.5T | S20C | PCS | 4 | |
| 50 | filter | HJ4-10A-T(027) | | PCS | 1 | |

| | | | | | | |
|----|-------------------------|--------------------|--------|-----|----|--|
| 51 | inductance | HJ6626-10-001 | | PCS | 1 | |
| 52 | fixed button | Φ20*7 | ABS | PCS | 16 | |
| 53 | pedestal cover-L | 695*265*70*T3.0 | ABS | PCS | 1 | |
| 54 | pedestal cover-R | 695*265*70*T3.0 | ABS | PCS | 1 | |
| 55 | frame front cover | 700*130*95*T3.0 | ABS | PCS | 1 | |
| 56 | motor cover | 690*440*110*T3.0 | ABS | PCS | 1 | |
| 57 | motor cover | 667*365*9*T3.0 | ABS | PCS | 1 | |
| 58 | end cap | 705*176*205*T3.0 | ABS | PCS | 1 | |
| 59 | sidebar cover | 332*72*12*T3.0 | PC | PCS | 2 | |
| 60 | cover-L | 855*85*45*T3.0 | ABS | PCS | 1 | |
| 61 | cover-R | 855*85*45*T3.0 | ABS | PCS | 1 | |
| 62 | running board crash pad | Φ25*33*M8 BK | rubber | PCS | 4 | |
| 63 | motor frame crash pad | Φ20*M6*28 | rubber | PCS | 2 | |
| 64 | adjustable cap | φ40*36*M8 | PVC | PCS | 4 | |
| 65 | crash pad | 187*30*37 | TPR | PCS | 2 | |
| 66 | sliding shoe | 24*40*17 | PVC | PCS | 4 | |
| 67 | cushion | 25*50*T4.0 | rubber | PCS | 2 | |
| 68 | pedestal wheel | φ8.2*φ55*T27 BK | nylon | PCS | 2 | |
| 69 | PU wheel | φ8.2*φ55*T24 BK | PU | PCS | 2 | |
| 70 | running belt | 540*2835*T1.6mm | PVC | PCS | 1 | |
| 71 | belt | 180J | rubber | PCS | 1 | |
| 72 | sidebar-L | 22*123*1537.5*T2.5 | PVC | PCS | 1 | |
| 73 | sidebar-R | 22*123*1537.5*T2.5 | PVC | PCS | 1 | |
| 74 | above bar | 18*92*1185 | PVC | PCS | 2 | |
| 75 | tape | 3*100 | PA | PCS | 5 | |
| 76 | tape | 4*200 BK | PA | PCS | 2 | |
| 77 | incline cushion block | 25*20*24.5*T2.0 BK | PP | PCS | 1 | |
| 78 | button | 32*15*7*T1.5 | ABS | PCS | 4 | |
| 79 | cover plate | 66*25*8*T3.0 | ABS | PCS | 1 | |

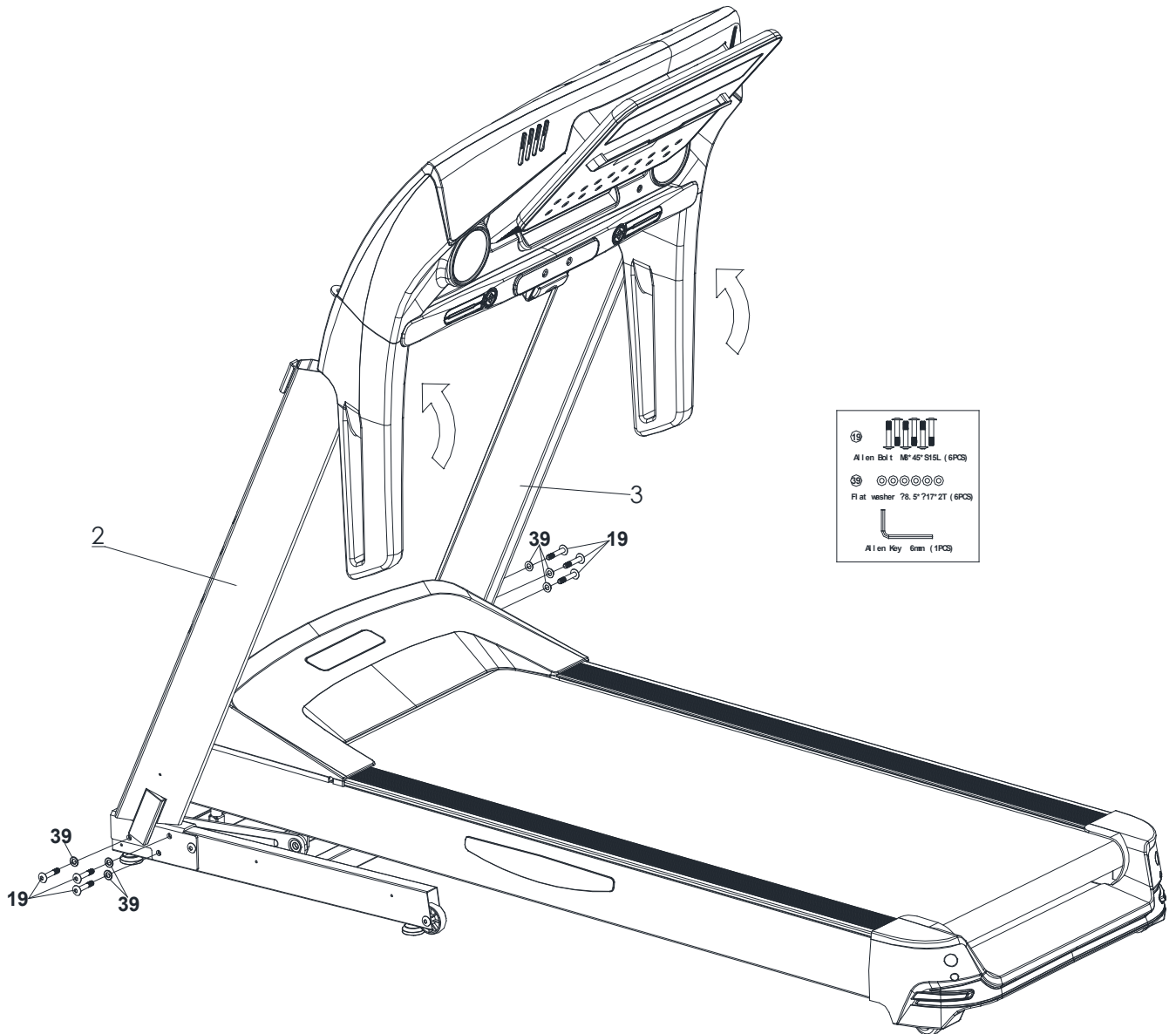
| | | | | | | |
|-----|-----------------------------|----------------|-----|-----|---|--|
| 80 | safety clamp | | ABS | SET | 1 | |
| 81 | safety switch lock | 36*15*14 BK | ABS | PCS | 1 | |
| 82 | flat washer | φ22*φ14.2*1.1T | | PCS | 4 | |
| 83 | keyboard plate | | | PCS | 1 | |
| 84 | shortcut keyboard plate | | | PCS | 2 | |
| 85 | control | B407, 220V | | PCS | 1 | |
| 86 | pedestal communication line | 1800mm | | PCS | 1 | |
| 87 | computer communication line | 900mm | | PCS | 1 | |
| 88 | safety switch lock | 1200mm | | PCS | 1 | |
| 89 | Audio cable | | | PCS | 1 | |
| 90 | power line | | | PCS | 1 | |
| 91 | connecting line | 150mm | | PCS | 1 | |
| 92 | connecting line | 100mm | | PCS | 1 | |
| 93 | connecting line | 150mm | | PCS | 1 | |
| 94 | ground lead | 100mm | | PCS | 1 | |
| 95 | motor | | | PCS | 1 | |
| 96 | motor incline | | | PCS | 1 | |
| 97 | ship type switch | 8A | | PCS | 1 | |
| 98 | socket | | | PCS | 1 | |
| 99 | connecting line | 250mm | | PCS | 1 | |
| 100 | magnetic core | φ31*φ19*13 | | PCS | 1 | |
| 101 | magnet | 12*6*5 | | PCS | 1 | |
| 102 | single face glue | 20*1185*T1.0 | EVA | PCS | 2 | |
| 103 | filter ground lead | 100L | | PCS | 1 | |
| 104 | running board | 667*1260*T18 | MDF | PCS | 1 | |
| | | | | | | |
| | | | | | | |
| | | | | | | |

Assembly instruction

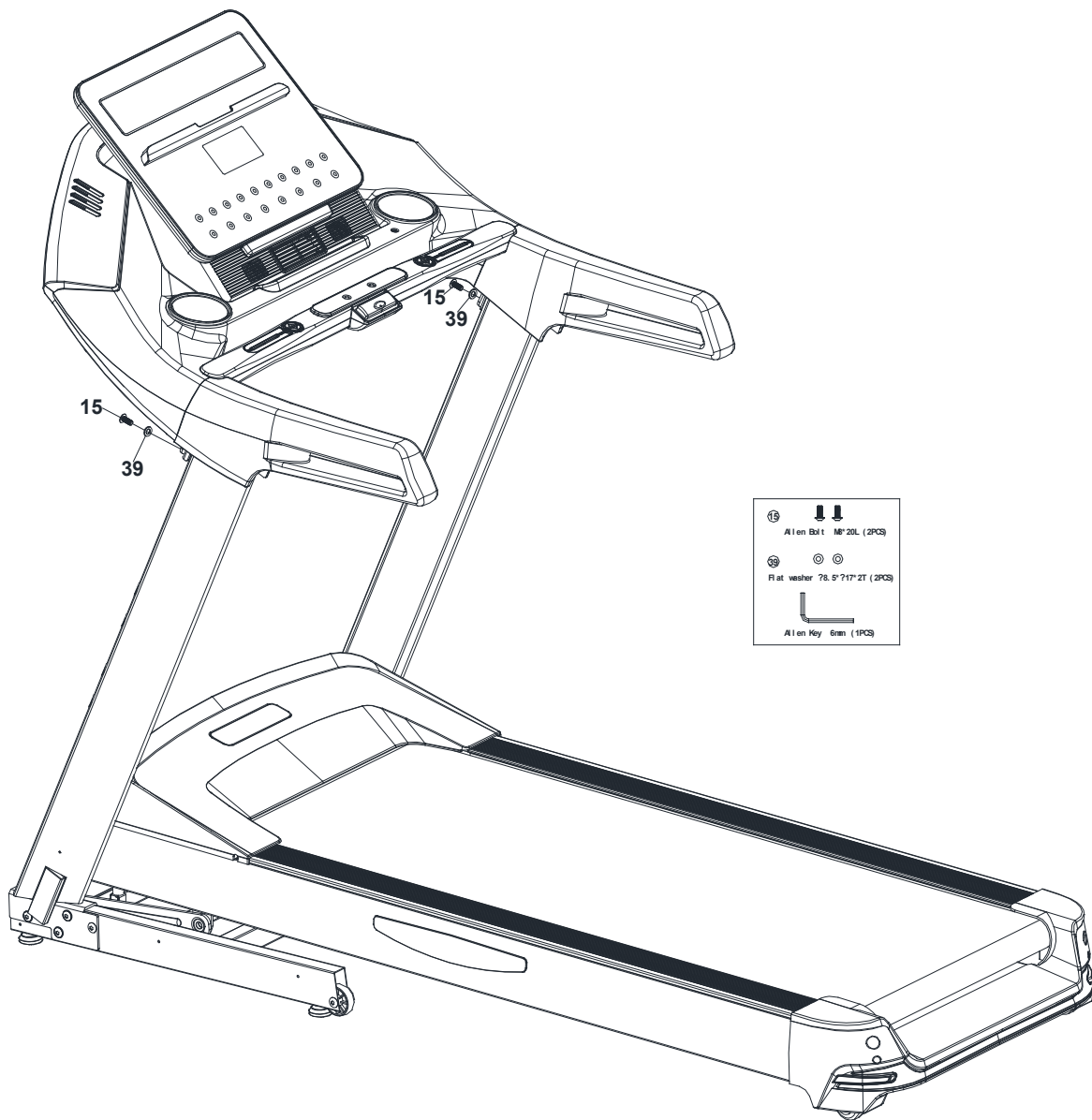
Step 1



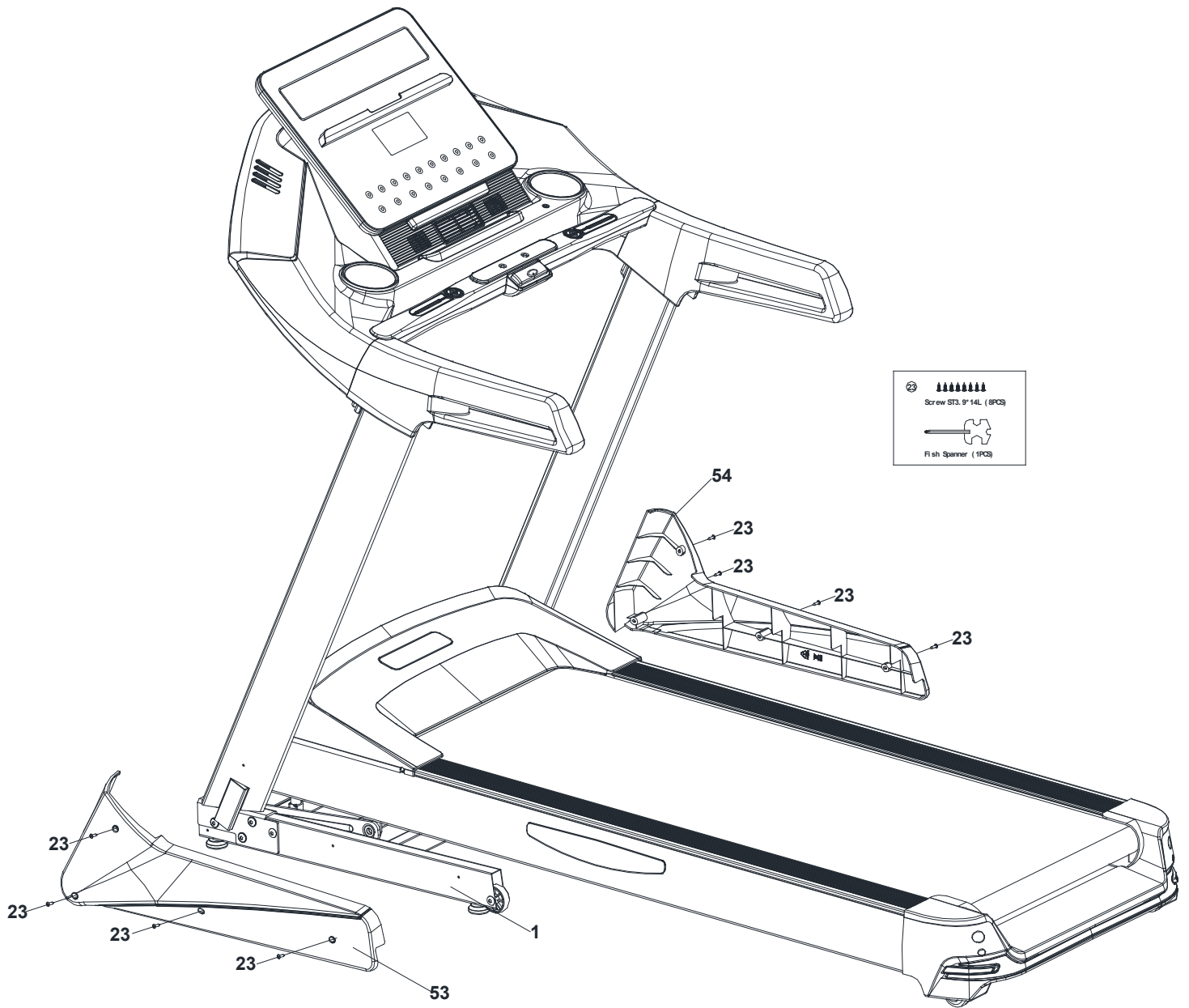
Step 2



Step 3



Step 4



Step 5



5401A Operating Instruction

Electronic display hardware

- 1、 LCD Screen with Blue Backlight
- 2、 Heart Function: Uses hand induction input.
- 3、 Additional Power Supply: Provides a 12V power supply for MP3.

Components of the Electronic Display:

- 1、 Appearance image below:



Functional overview:

- 1.1 12 built-in default automatic training modes, each lasting 30 minutes.
- 1.2 Supports countdown clock, countdown distance, and countdown calorie training modes.
- 1.3 2 USER modes.
- 1.3 Running speed: 1.0-20 KM/H (Actual speed: 1.0-19.5 KM/H).
- 1.4 Range of incline: 0-15%
- 1.5 Range of incline: 0-15%
- 1.6 Hand heart rate function.
- 1.7 Wireless heart rate function reserved.
- 1.8 MP3 function.

Basic Operation Instructions for Keys :

- 2.1 **“PROGRAM”**: Mode selection key. Under stop state, cycle through modes (P1---P12---P1).
- 2.2 **“MODE”**: Setup key. Under manual status, select cyclic countdown clock, countdown distance, or countdown calorie training mode.
- 2.5 **“USER”**: User custom program. Under standby status, press to enter USER1-USER2 options.
- 2.6 **“STOP”**: Stop key. Press to pause under running status. In setup mode, press to return to standby status.
- 2.7 **“START”**: Start key. Press under stop status to begin running.
- 2.8 **“FAN”**: Fan key. Press to switch on, press again to switch off.
- 2.9 **SPEED “+”**: Accelerator key. Under running status, each press increases speed by 0.1 KM/H. Long press to increase continuously.
- 2.10 **SPEED “-”**: Slow down key. Under running status, each press decreases speed by 0.1 KM/H. Long press to decrease continuously.

- 2.9 **“QUICK SPEED”**: Six quick speed keys. Under running status, directly select corresponding speeds: 3, 6, 9, 12, 15 KM/H.
- 2.10 **INCLINE “+”**: Incline increase key. Under running status, long press to increase continuously.
- 2.11 **INCLINE “-”**: Incline decrease key. Under running status, long press to decrease continuously.
- 2.12 **“QUICK INCLINE”**: Six quick incline keys. Under running status, directly select corresponding inclines: 3, 6, 9, 12, 15%.

3. Automatic Training Mode Instructions :

- 3.1 Selection of Countdown Training Style:** Under standby status, press the “MODE” key to enter countdown clock setup mode. Press “MODE” again to enter countdown distance setup mode. Press “MODE” again to enter countdown calorie setup mode.
- 3.2 Countdown Clock Training Mode:** Under standby status, press “MODE” to enter setup status. The time window will display and blink, defaulting to 30:00. Press SPEED + or - to modify the set value. Setting range: 1—99 minutes. Press “START” to start the treadmill at 1 KM/H. Adjust speed with SPEED + or -. When the countdown time reaches 00:00, the treadmill will stop automatically.
- 3.3 Countdown Distance Training Mode:** Under standby status, press “MODE” twice to enter setup status. The distance window will display and blink, defaulting to 1.0 KM/H. Press SPEED + or - to modify the set value. Setting range: 1.00--9.0 KM. Press “START” to start the treadmill at 1 KM/H. Adjust speed with SPEED + or -. When the countdown distance reaches 0.0, the treadmill will stop automatically.
- 3.4 Countdown Calorie Training Mode:** Under standby status, press “MODE” three times to enter setup status. The calorie window will display and blink, defaulting to 50 CAL. Press SPEED + or - to modify the set value. Setting range: 1-999 CAL. Press “START” to start the treadmill at 1 KM/H. Adjust speed with SPEED + or -. When the countdown calorie reaches 0, the treadmill will stop automatically.

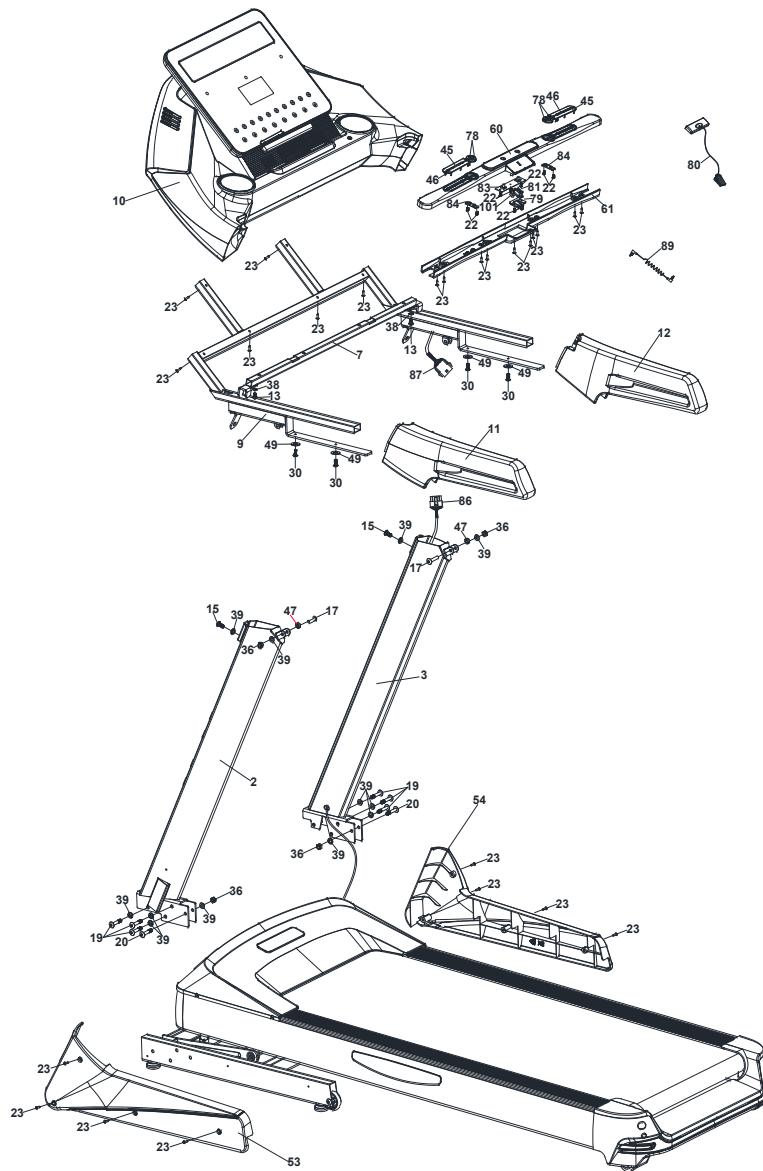
4. USER Mode Operating Instructions :

4.1 Power on and display normally. Press “USER” to enter user custom mode. Press USER to select USER1 or USER2. Confirm by pressing MODE to enter time setup. Press MODE again to enter speed and incline adjustment for each section. After setting, press START to begin, or press STOP to exit.

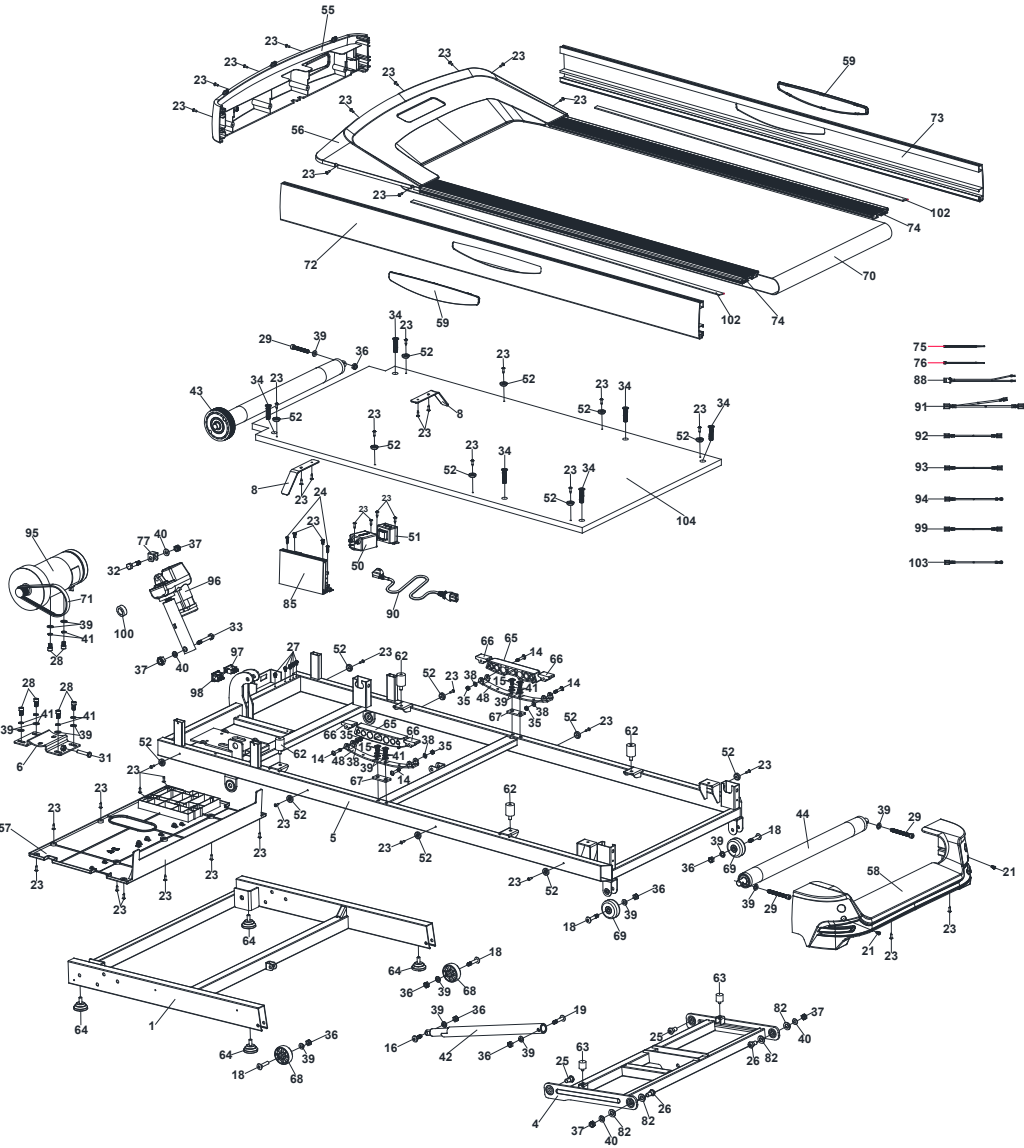
Error messages:

- 3.1 E0 Safety switch error. Ensure the safety key is properly inserted.
- 3.2 E1 No speed signal detected within 10 seconds after start-up. The system will stop automatically. °
- 3.3 E2 Overcurrent error. The controller's current exceeded the rated current for 3 seconds.
- 3.5 E4 Motor voltage issue or no connection to the motor line.
- 3.6 E5 Communication line interruption.
- 3.7 E6 Power tube fault.

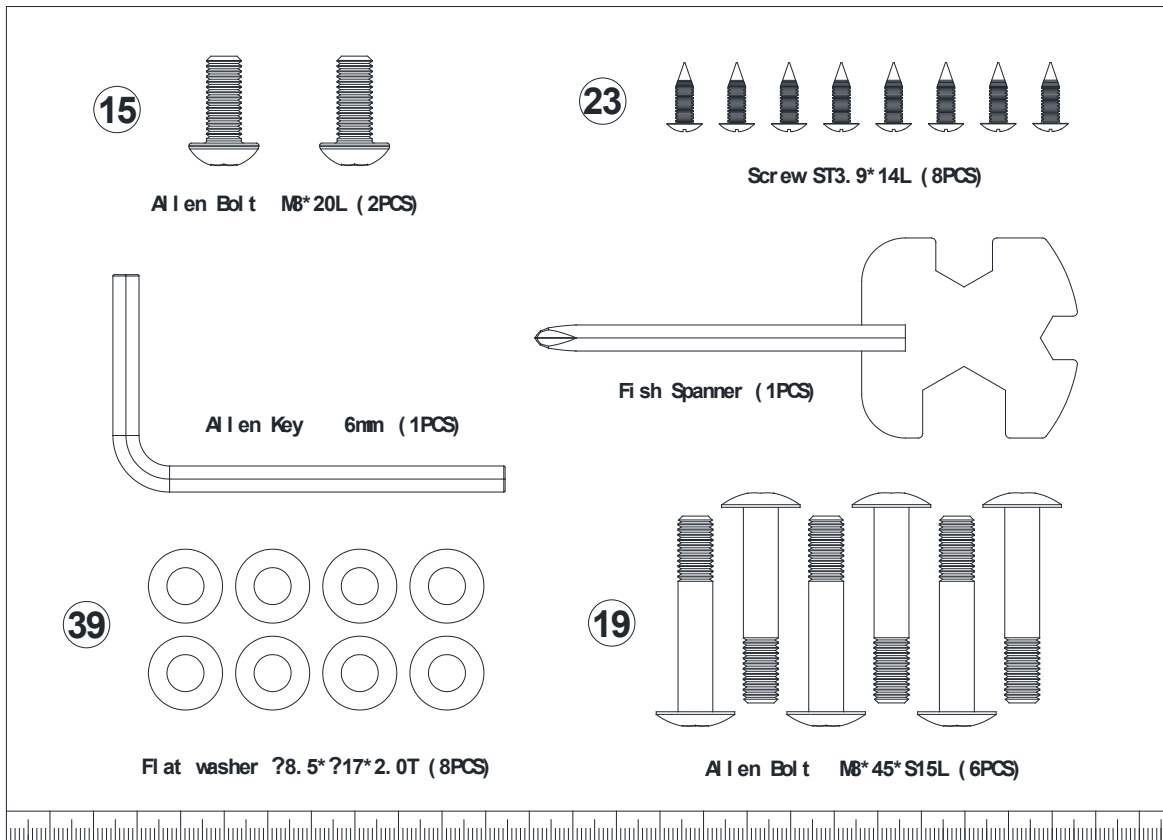
Eksploderet tegning



Eksploderet tegning



Værktøj



Reservedelsliste

| Nr. | Navn | Specifikation | Materiale | Enhed | Antal | Bemærkning |
|-----|-----------------------------|-------------------|-----------|-------|-------|------------|
| 1 | ramme | | | SÆT | 1 | |
| 2 | opretstående stolpe venstre | | | SÆT | 1 | |
| 3 | opretstående stolpe højre | | | SÆT | 1 | |
| 4 | hældningsramme | | | SÆT | 1 | |
| 5 | hovedramme | | | SÆT | 1 | |
| 6 | motorbeslag | | | SÆT | 1 | |
| 7 | midterste håndtagsrør | | | SÆT | 1 | |
| 8 | bæltækrog | | | STK | 2 | |
| 9 | Computer - monteringsbeslag | | | SÆT | 1 | |
| 10 | computersæt | | | SÆT | 1 | |
| 11 | Venstre håndtag | 540*180*80 | PU | STK | 1 | |
| 12 | Højre håndtag | 540*180*80 | PU | STK | 1 | |
| 13 | Skrue | M6*16L | S45C | STK | 2 | |
| 14 | Skrue | M6*43L*S11L | S45C | STK | 4 | |
| 15 | Skrue | M8*P1.25*20L | S45C | STK | 6 | |
| 16 | Skrue | M8*30L | S45C | STK | 1 | |
| 17 | Skrue | M8*P1.25*36L*S15L | S45C | STK | 2 | |
| 18 | Skrue | M8*40L*S18L | S45C | STK | 4 | |
| 19 | Skrue | M8*45L | S45C | STK | 7 | |
| 20 | Skrue | M8*50L*S20L | S45C | STK | 2 | |
| 21 | Skrue | M4*12L | S45C | STK | 2 | |
| 22 | Skrue | ST2.9*8L | S45C | STK | 9 | |
| 23 | Skrue | ST3.9*14L | S45C | STK | 69 | |
| 24 | Skrue | ST3.9*20L | S45C | STK | 2 | |
| 25 | Skrue | φ12*M10*28L | 45# | STK | 2 | |

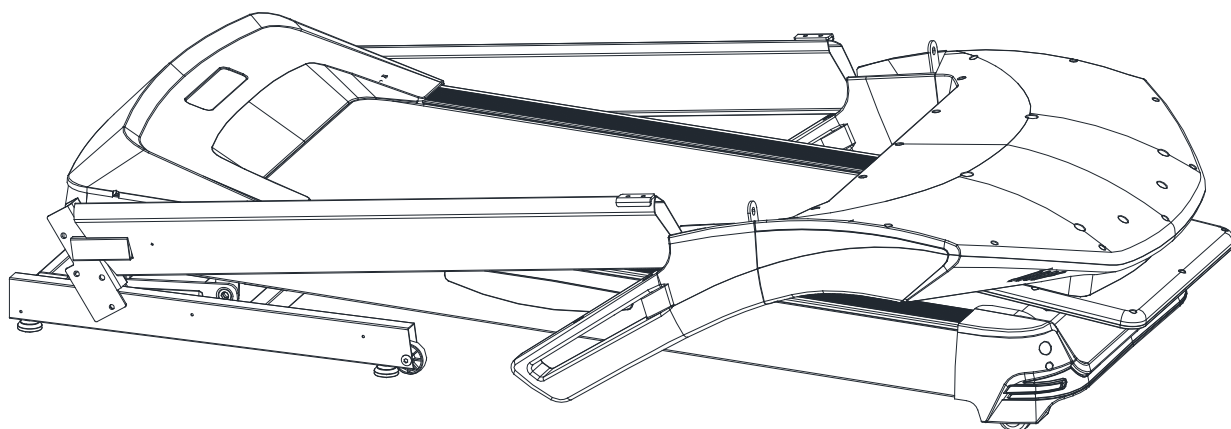
| | | | | | | |
|----|---------------------------|--------------------------|------|-----|----|--|
| 26 | Skrue | φ12*10L*M10*30L | 45# | STK | 2 | |
| 27 | Skrue | M4*10L | S45C | STK | 5 | |
| 28 | Skrue | M8*16L | S45C | STK | 6 | |
| 29 | Skrue | M8*55L | S45C | STK | 3 | |
| 30 | Skrue | M6*10L | S45C | STK | 4 | |
| 31 | Skrue | M8*P1.25*30L | S45C | STK | 1 | |
| 32 | Skrue | M10*50L | S45C | STK | 1 | |
| 33 | Skrue | M10*60L*S15L | S45C | STK | 1 | |
| 34 | Skrue | M8*25L | S45C | STK | 6 | |
| 35 | Låsemøtrik | M6*5.5T | S20C | STK | 4 | |
| 36 | Låsemøtrik | M8*7T | S20C | STK | 10 | |
| 37 | Låsemøtrik | M10*10T | S20C | STK | 4 | |
| 38 | Spændeskive | φ6.5*φ13*1.5T | S20C | STK | 6 | |
| 39 | Spændeskive | φ8.5*φ17*2T | S20C | STK | 31 | |
| 40 | Spændeskive | φ10*φ20*2T | S20C | STK | 4 | |
| 41 | Fjederskive | φ8.5*φ13.5*2.5T | S20C | STK | 10 | |
| 42 | lufttrykstang | QDY22*10-714*281-40KG | | STK | 1 | |
| 43 | forrulle | φ95*φ48*φ17*610.5(618.5) | | STK | 1 | |
| 44 | bagrulle | φ46*φ39*φ17*595(612) | | STK | 1 | |
| 45 | håndtag stålskive venstre | 109*10.5*T0.5 | | STK | 2 | |
| 46 | håndtag stålskive højre | 109*10.5*T0.5 | | STK | 2 | |
| 47 | drivrør | HR φ12.7*φ8.2*11 | Q235 | STK | 2 | |
| 48 | fjederstål | 63*254*T3.5 | 65Mn | STK | 2 | |
| 49 | Spændeskive | φ6*φ18*1.5T | S20C | STK | 4 | |
| 50 | filter | HJ4-10A-T(027) | | STK | 1 | |
| 51 | induktans | HJ6626-10-001 | | STK | 1 | |
| 52 | fast knap | φ20*7 | ABS | STK | 16 | |

| | | | | | | |
|----|-----------------------------|--------------------|-------|-----|---|--|
| 53 | pedestal cover-L | 695*265*70*T3.0 | ABS | STK | 1 | |
| 54 | pedestal cover-R | 695*265*70*T3.0 | ABS | STK | 1 | |
| 55 | ramme frontdæksel | 700*130*95*T3.0 | ABS | STK | 1 | |
| 56 | motor cover | 690*440*110*T3.0 | ABS | STK | 1 | |
| 57 | motor cover | 667*365*9*T3.0 | ABS | STK | 1 | |
| 58 | Endedæksel | 705*176*205*T3.0 | ABS | STK | 1 | |
| 59 | sidebar cover | 332*72*12*T3.0 | PC | STK | 2 | |
| 60 | Cover venstre | 855*85*45*T3.0 | ABS | STK | 1 | |
| 61 | Cover højre | 855*85*45*T3.0 | ABS | STK | 1 | |
| 62 | løbebånd stødabsorbering | Φ25*33*M8 BK | gummi | STK | 4 | |
| 63 | motor ramme stødabsorbering | Φ20*M6*28 | gummi | STK | 2 | |
| 64 | justerbar hætte | φ40*36*M8 | PVC | STK | 4 | |
| 65 | stødabsorbering | 187*30*37 | TPR | STK | 2 | |
| 66 | glide sko | 24*40*17 | PVC | STK | 4 | |
| 67 | Pude | 25*50*T4.0 | gummi | STK | 2 | |
| 68 | sokkelhjul | φ8.2*φ55*T27 BK | nylon | STK | 2 | |
| 69 | PU hjul | φ8.2*φ55*T24 BK | PU | STK | 2 | |
| 70 | Løbebælte | 540*2835*T1.6mm | PVC | STK | 1 | |
| 71 | bælte | 180J | gummi | STK | 1 | |
| 72 | sidebar venstre | 22*123*1537.5*T2.5 | PVC | STK | 1 | |
| 73 | sidebar højre | 22*123*1537.5*T2.5 | PVC | STK | 1 | |
| 74 | overligger | 18*92*1185 | PVC | STK | 2 | |
| 75 | tape | 3*100 | PA | STK | 5 | |
| 76 | Tape | 4*200 BK | PA | STK | 2 | |
| 77 | hældningspudeblok | 25*20*24.5*T2.0 BK | PP | STK | 1 | |
| 78 | Knap | 32*15*7*T1.5 | ABS | STK | 4 | |
| 79 | dækselplade | 66*25*8*T3.0 | ABS | STK | 1 | |
| 80 | sikkerhedsklemme | | ABS | STK | 1 | |
| 81 | sikkerhedsafbryderlås | 36*15*14 BK | ABS | STK | 1 | |

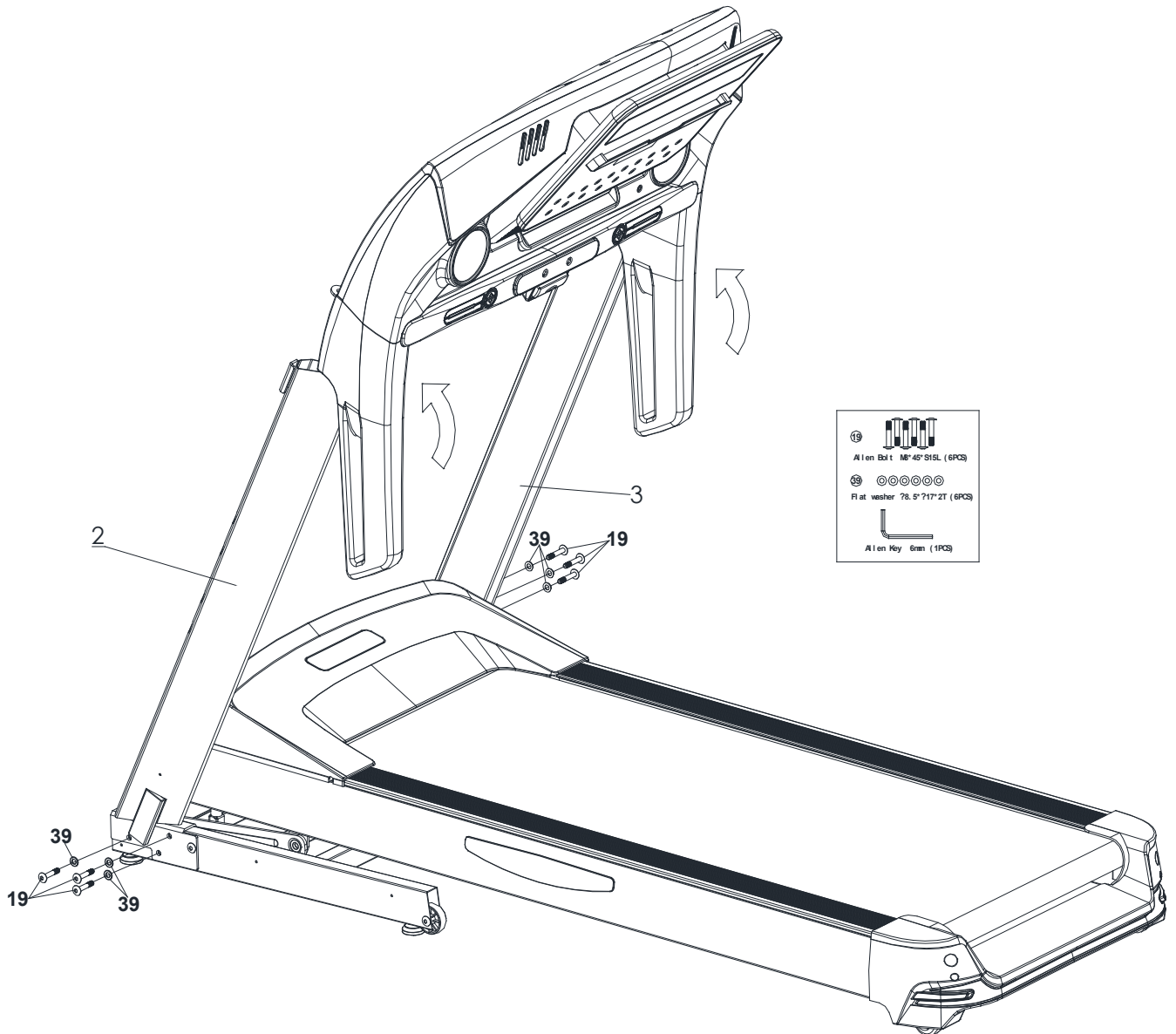
| | | | | | | |
|-----|-----------------------------|----------------|-----|-----|---|--|
| 82 | Spændeskive | φ22*φ14.2*1.1T | | STK | 4 | |
| 83 | tastaturplade | | | STK | 1 | |
| 84 | genvejstastaturplade | | | STK | 2 | |
| 85 | kontrol | B407, 220V | | STK | 1 | |
| 86 | Sokkelkommunikation kabel | 1800mm | | STK | 1 | |
| 87 | Computerkommunikation kabel | 900mm | | STK | 1 | |
| 88 | sikkerhedsafbryderlås | 1200mm | | STK | 1 | |
| 89 | lydkabel | | | STK | 1 | |
| 90 | strømkabel | | | STK | 1 | |
| 91 | forbindelseskabel | 150mm | | STK | 1 | |
| 92 | forbindelseskabel | 100mm | | STK | 1 | |
| 93 | forbindelseskabel | 150mm | | STK | 1 | |
| 94 | jordledning | 100mm | | STK | 1 | |
| 95 | motor | | | STK | 1 | |
| 96 | motorhældning | | | STK | 1 | |
| 97 | ship type switch | 8A | | STK | 1 | |
| 98 | stik | | | STK | 1 | |
| 99 | forbindelseskabel | 250mm | | STK | 1 | |
| 100 | magnetisk kerne | φ31*φ19*13 | | STK | 1 | |
| 101 | magnet | 12*6*5 | | STK | 1 | |
| 102 | enkeltflade lim | 20*1185*T1.0 | EVA | STK | 2 | |
| 103 | filter jordledning | 100L | | STK | 1 | |
| 104 | løbebord | 667*1260*T18 | MDF | STK | 1 | |
| | | | | | | |
| | | | | | | |
| | | | | | | |

Samlevejledning

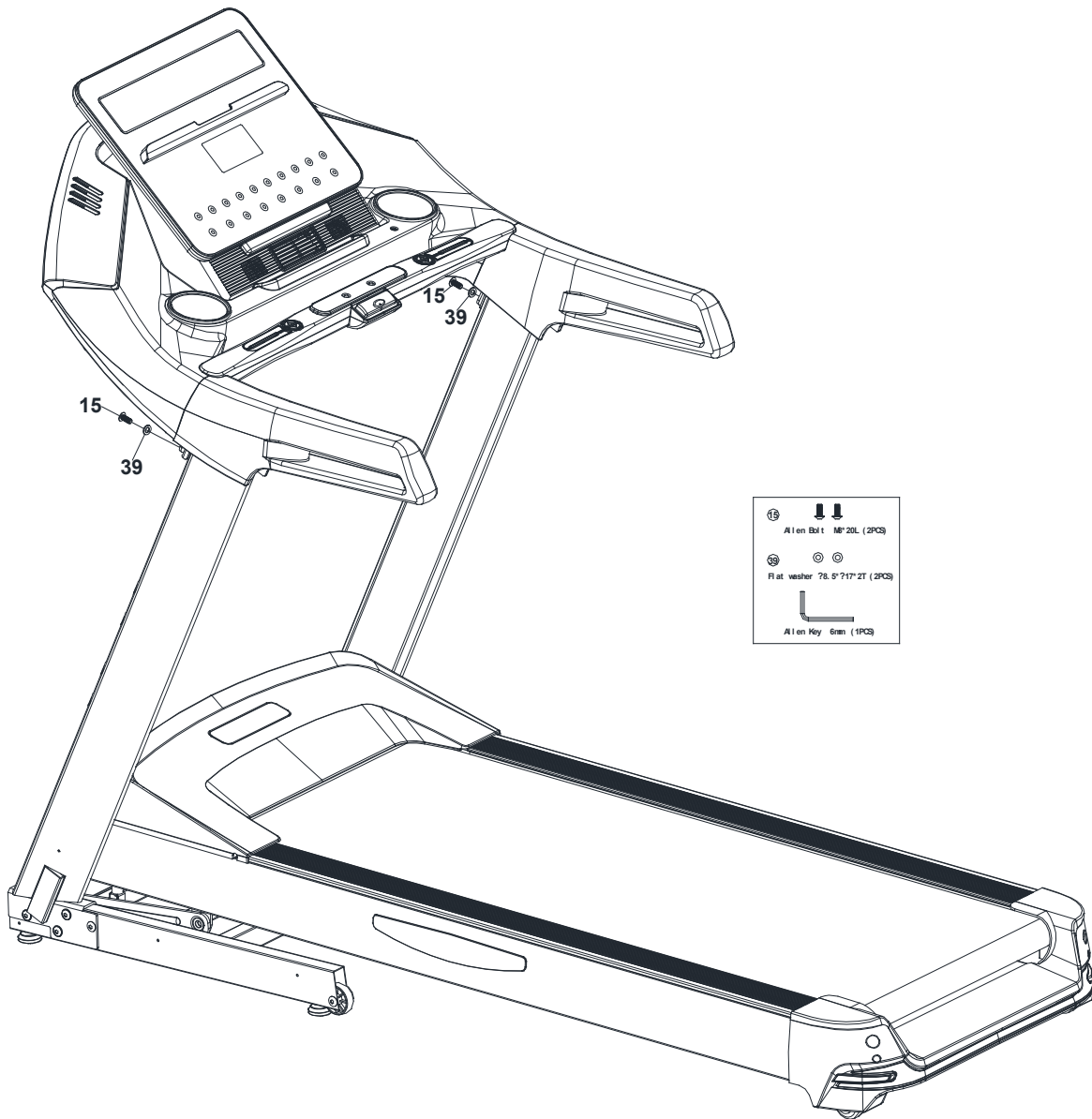
Trin 1



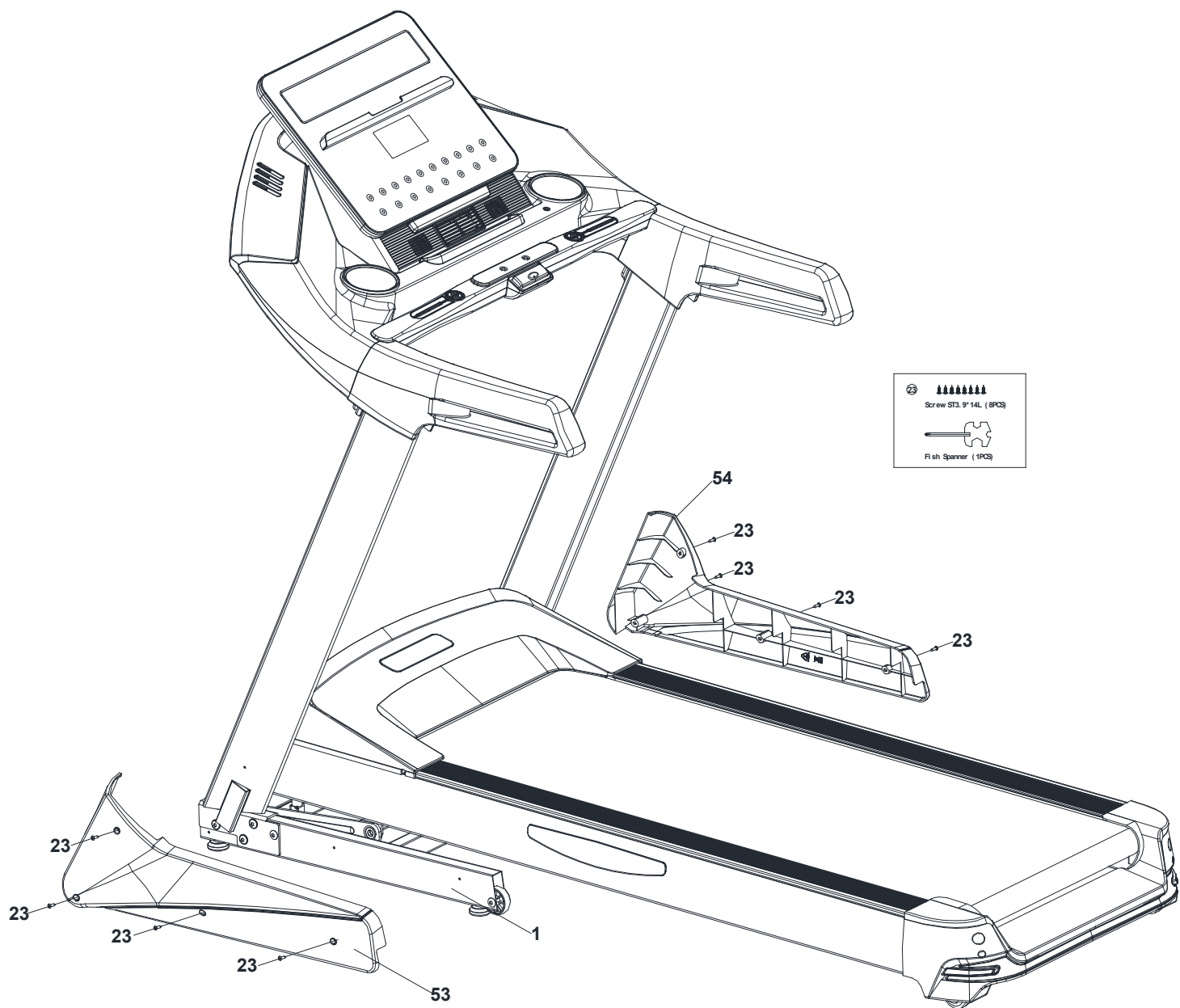
Trin 2



Trin 3



Trin 4



Trin 5



5401A Betjeningsvejledning

Elektronisk display hardware

1. LCD-skærm med blå baggrundslysning.
2. Hjertermåling: Brug håndinduktionsinput.
3. Ekstra strømforsyning (12V) til MP3.

Komponent af elektronisk skærm:

1. Se billed nedenfor:



Overblik over funktioner:

- 1.1 12 indbyggede standard automatiske træningstilstande, 30 minutter pr. tilstand;
- 1.2 Opsætning af nedtællingsur, nedtællingsdistance, nedtælling af kalorietræningstilstand;
- 1.3 2 BRUGER-tilstande
- 1.3 Hastighed: 1,0-20 km/t (faktisk 1,0 ~ 19,5 km/t)
- 1.4 Område for stigende hældning: 0--15 %
- 1.5 5 genvejstaster for hastighed og hældning;
- 1.6 Håndpulsfunktion.
- 1.7 Trådløs pulsmåling;
- 1.8 MP3 Funktion.

Betjening af knapper :

- 2.1 “PROGRAM”: tilstandsvalgtast under stoptilstand, vælg program (P1---P12- —P1).
- 2.2 “MODE”: opsætningstast under manuel status, vælg nedtællingsur, nedtællingsdistance, nedtællingstilstand for kalorietræning.
- 2.5 “USER”: brugertilpasset program - tryk og gå ind i USER1-USER2 muligheder.
- 2.6 “STOP” : stop-tast – Tryk på knappen for at pause når løbebåndet kører eller under opsætningstilstand. Bruges også til at gå tilbage til standby-status.
- 2.7 “START” : Start-tast - tryk når løbebåndet er stoppet for derefter at begynde at løbe.
- 2.8 “FAN” : blæsertast, tryk og tænd, tryk igen og sluk.
- 2.7 SPEED“+” : Øge hastigheden. Bruges når løbebåndet kører. For hvert tryk øges hastigheden 0,1 km/t. Med et langt tryk øges det kontinuerligt.
- 2.8 SPEED“-” : Sænk løbebåndets hastighed, når du løber. For hvert tryk falder hastigheden 0,1 km/t. Med et langt tryk falder det konstant.
- 2.9 “QUICK SPEED” : 6 hurtigtaster. Direkte knap til den tilsvarende hastighed:3,6,9,12,15 km/t
- 2.10 INCLINE“+” : For at øge hældningen, mens du løber. Hvis du trykker længe, øges den konstant.
- 2.11 INCLINE “-” : For at mindske hældningen, mens du løber. Hvis du trykker længe, falder den konstant.
- 2.12 “QUICK INCLINE” : 6 hurtigtaster til styring af hældningen. Den direkte mulighed tilsvarende hældning:3,6,9,12,15%

3. Instruktion i automatisk træningstilstand :

3.1 Valg af nedtællingstræningsstil: under standby-status, tryk på "MODE"-tasten, gå ind i opsætningstilstand for nedtællingsur; tryk på "MODE" igen, gå ind i opsætningstilstand for nedtællingsdistance; tryk på "MODE" igen, gå ind i opsætningstilstand for nedtælling af kalorier.

3.2 Træningstilstand for nedtællingsur: under standby-status, tryk på "MODE", gå ind i opsætningsstatus, klokkeslæt blinker, standarddisplay 30:00, tryk på SPEED+, - modifier indstillet værdi, indstillingsområde: 1-99 minutter. Tryk på "START" start løbebåndet, løb som 1 km/t, kan trykke på SPEED+, - juster hastigheden. Når nedtællingstiden er 00:00, stopper løbebåndet med at arbejde automatisk;

3.3 Nedtællings-distancetræningstilstand: under standby-status, tryk på "MODE" to gange, gå ind i opsætningsstatus, distancevindue blinker, standarddisplay 1,0 KM/H, tryk på SPEED+, - modifier den indstillede værdi, indstillingsområde: 1,00--9,0 KM.
"START" start løbebåndet, løb som 1 km/t, kan trykke på SPEED+ , - juster hastigheden.
Når nedtællingsdiatancen er 0,0, holder løbebåndet op med at arbejde automatisk;

3.4 nedtælling af kaloritræningstilstand: under standby-status, tryk på "MODE" tre gange, gå ind i opsætningsstatus, blinkende kalorievinduesvisning, standarddisplay 50CAL, tryk på SPEED+ , - ændr den indstillede værdi, indstillingsområde. Tryk på "START" start løbebåndet, løb som 1 km/t, kan trykke på SPEED+ , - juster hastigheden. Når nedtællingens kalorieindhold er 0, stopper løbebåndet med at arbejde automatisk;

4. USER mode betjeningsvejledning:

4.1 Tænd og vis normal, tryk derefter på "USER" gå ind i brugertilpasset tilstand, tryk på USER for at vælge USER1, USER2. Bekræft og tryk MODE ind i tidsindstilling, tryk på MODE igen for at gå ind i hastighed og stigningsjustering af hver sektion. Efter indstilling, tryk på START for at starte, eller tryk på STOP for at afslutte.

5. Fejlmeddelse:

- 5.1 E0 Fejl på sikkerhedsafbryderen. Sørg for, at sikkerhedsnøglen er korrekt isat.
- 5.2 E1 Ingen hastighedssignal detekteret inden for 10 sekunder efter start. Systemet stopper automatisk.
- 5.3 E2 Overstrømsfejl. Controllerens strøm oversteg den nominelle strøm i 3 sekunder.
- 5.5 E4 Motorens spændingsproblem eller ingen forbindelse til motorlinjen.
- 5.6 E5 Afbrydelse af kommunikationslinjen.
- 5.7 E6 Fejl på strømforsyningsrøret.

Hældningsprogram Program

| | | | | | | | | | | | | | | | | | | | | | | | | | | | | | | | |
|---------|---|---|---|---|---|---|---|---|---|---|---|---|---|---|---|---|---|---|---|---|---|---|---|---|---|---|---|---|---|---|---|
| P 1 | 0 | 7 | 7 | 6 | 6 | 5 | 5 | 4 | 4 | 3 | 3 | 2 | 2 | 2 | 2 | 2 | 2 | 3 | 3 | 4 | 4 | 5 | 5 | 7 | 7 | 6 | 6 | 4 | 3 | 0 | |
| P 2 | 0 | 3 | 3 | 5 | 5 | 7 | 7 | 9 | 9 | 7 | 7 | 5 | 5 | 3 | 3 | 3 | 3 | 5 | 5 | 7 | 7 | 9 | 9 | 7 | 7 | 5 | 5 | 3 | 3 | 0 | |
| P 3 | 0 | 5 | 5 | 5 | 1 | 1 | 5 | 5 | 5 | 1 | 1 | 5 | 5 | 5 | 1 | 1 | 5 | 5 | 5 | 1 | 1 | 5 | 5 | 5 | 1 | 1 | 5 | 5 | 5 | 0 | |
| P 4 | 0 | 2 | 3 | 4 | 5 | 6 | 7 | 7 | 6 | 5 | 4 | 3 | 2 | 1 | 1 | 2 | 3 | 4 | 5 | 6 | 7 | 7 | 6 | 5 | 4 | 3 | 2 | 1 | 1 | 0 | |
| P 5 | 0 | 2 | 3 | 4 | 5 | 6 | 7 | 7 | 6 | 5 | 4 | 3 | 2 | 1 | 1 | 2 | 3 | 4 | 5 | 6 | 7 | 7 | 6 | 5 | 4 | 3 | 2 | 1 | 1 | 0 | |
| P 6 | 0 | 2 | 3 | 4 | 5 | 6 | 7 | 7 | 6 | 5 | 4 | 3 | 2 | 1 | 1 | 2 | 3 | 4 | 5 | 6 | 7 | 7 | 6 | 5 | 4 | 3 | 2 | 1 | 1 | 0 | |
| P 7 | 2 | 3 | 4 | 5 | 6 | 7 | 8 | 9 | 9 | 9 | 9 | 9 | 8 | 7 | 6 | 5 | 4 | 3 | 2 | 2 | 2 | 3 | 4 | 5 | 6 | 7 | 8 | 9 | 5 | 0 | |
| P 8 | 0 | 3 | 3 | 5 | 5 | 7 | 7 | 9 | 9 | 7 | 7 | 5 | 5 | 3 | 3 | 3 | 3 | 5 | 5 | 7 | 7 | 9 | 9 | 7 | 7 | 5 | 5 | 3 | 3 | 0 | |
| P 9 | 0 | 2 | 2 | 2 | 2 | 2 | 2 | 2 | 2 | 2 | 2 | 2 | 2 | 2 | 2 | 2 | 2 | 2 | 2 | 2 | 2 | 2 | 2 | 2 | 2 | 2 | 2 | 2 | 2 | 0 | |
| P 10 | 9 | 8 | 7 | 6 | 5 | 4 | 3 | 3 | 4 | 5 | 6 | 7 | 8 | 9 | 9 | 8 | 7 | 6 | 5 | 4 | 3 | 3 | 4 | 5 | 6 | 7 | 8 | 9 | 9 | 0 | |
| P 11 | 9 | 8 | 7 | 6 | 5 | 4 | 3 | 3 | 4 | 5 | 6 | 7 | 8 | 9 | 9 | 8 | 7 | 6 | 5 | 4 | 3 | 3 | 4 | 5 | 6 | 7 | 8 | 9 | 9 | 0 | |
| P 12 | 2 | 2 | 2 | 2 | 2 | 2 | 2 | 2 | 3 | 3 | 3 | 3 | 3 | 3 | 3 | 4 | 4 | 4 | 4 | 4 | 4 | 4 | 5 | 5 | 5 | 5 | 5 | 5 | 5 | 3 | 0 |